

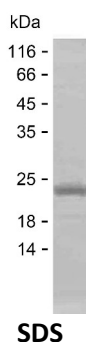
Product Name: Recombinant Human MLX Protein
Catalog #: PEH10591



Summary

Name	MLX_HUMAN
Purity	Greater than 85% as determined by reducing SDS-PAGE
Endotoxin level	Please contact with the lab for this information
Tag	C-His
Accession #	Q9UH92
Host	E.coli
Species	Human
Molecular Mass	18 kDa
Buffer	Phosphate buffered saline
Shipping	The product is shipped on dry ice/polar packs. Upon receipt, store it immediately at the temperature listed below.
Stability&Storage	Store at $\leq -70^{\circ}\text{C}$, stable for 12 months after receipt. Store at $\leq -70^{\circ}\text{C}$, stable for 3 months under sterile conditions after opening. Please minimize freeze-thaw cycles.
Sequence	GLFVSTRKG SVVSRANSIG STSASSVPNT DEEDSDYHQE AYKESYKDRR RRAHTQAEQK RRDAIKRGYD DLQTIVPTCQ QQDFSIGSQK LSKAIVLQKT IDYIQFLHKE KKKQEEEVST LRKDV TALKI MKVNYEQIVK

image



Background

Alternative Names	Max-like protein X (Class D basic helix-loop-helix protein 13) (bHLHd13) (Max-like bHLHZip protein) (Protein BigMax) (Transcription factor-like protein 4)
--------------------------	--

Note

For Research Use Only , Not for Diagnostic Use

Product Name: Recombinant Human MLX Protein
Catalog #: PEH10591

