

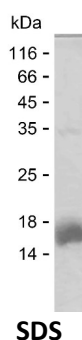
Product Name: Recombinant Human KPNA2 Protein
Catalog #: PEH10531



Summary

Name	IMA1_HUMAN
Purity	Greater than 85% as determined by reducing SDS-PAGE
Endotoxin level	Please contact with the lab for this information
Tag	C-His
Accession #	P52292
Host	E.coli
Species	Human
Molecular Mass	12 kDa
Buffer	Phosphate buffered saline
Shipping	The product is shipped on dry ice/polar packs. Upon receipt, store it immediately at the temperature listed below.
Stability&Storage	Store at $\leq -70^{\circ}\text{C}$, stable for 12 months after receipt. Store at $\leq -70^{\circ}\text{C}$, stable for 3 months under sterile conditions after opening. Please minimize freeze-thaw cycles.
Sequence	AKDTKIILVI LDAISNIFQA AEKLGETEKL SIMIEECGGL DKIEALQNHE NESVYKASLS LIEKYFSVEE EEDQNVVPET TSEG YTFQVQ

image



Background

Alternative Names Importin subunit alpha-1 (Karyopherin subunit alpha-2) (RAG cohort protein 1) (SRP1-alpha)

Note

For Research Use Only , Not for Diagnostic Use