

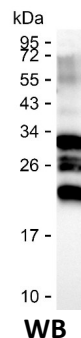
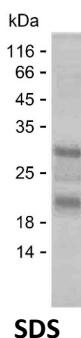
**Product Name: Recombinant Human PASD1 Protein**  
**Catalog #: PEH10428**



## Summary

<b>Name</b>	PASD1_HUMAN
<b>Purity</b>	Greater than 85% as determined by reducing SDS-PAGE
<b>Endotoxin level</b>	Please contact with the lab for this information
<b>Tag</b>	C-His
<b>Accession #</b>	Q8IV76
<b>Host</b>	E.coli
<b>Species</b>	Human
<b>Molecular Mass</b>	23 kDa
<b>Buffer</b>	Phosphate buffered saline
<b>Shipping</b>	The product is shipped on dry ice/polar packs.Upon receipt, store it immediately at the temperature listed below.
<b>Stability&amp;Storage</b>	Store at $\leq -70^{\circ}\text{C}$ , stable for 12 months after receipt.Store at $\leq -70^{\circ}\text{C}$ , stable for 3 months under sterile conditions after opening. Please minimize freeze-thaw cycles.
<b>Sequence</b>	KEQLEERTWL LHDAIQNQQN ALELMMDHLQ KQPNTLRHVV IPDLQSSEAV PKKQQKQHAG QV KRPLPHPK DVKCFGLSL SNSLKNTGEL QEPCVAFNQQ QLVQQEQHLK EQQRQLREQL QQLREQRKVQ KQKQMQEKKK LQEQKMQEKK KLQEQRQK KKLQERKKWQ GQMLQKEPEE

## image



## Background

**Alternative Names** Circadian clock protein PASD1 (Cancer/testis antigen 63) (CT63) (OX-TES-1) (PAS domain-containing protein 1)

## Note

For Research Use Only , Not for Diagnostic Use

**Product Name: Recombinant Human PASD1 Protein**  
**Catalog #: PEH10428**

---

