

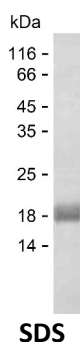
Product Name: Recombinant Human TBL1Y Protein
Catalog #: PEH10425



Summary

Name	TBL1Y_HUMAN
Purity	Greater than 85% as determined by reducing SDS-PAGE
Endotoxin level	Please contact with the lab for this information
Tag	C-His
Accession #	Q9BQ87
Host	E.coli
Species	Human
Molecular Mass	16 kDa
Buffer	Phosphate buffered saline
Shipping	The product is shipped on dry ice/polar packs. Upon receipt, store it immediately at the temperature listed below.
Stability&Storage	Store at $\leq -70^{\circ}\text{C}$, stable for 6 months after receipt. Store at $\leq -70^{\circ}\text{C}$, stable for 3 months under sterile conditions after opening. Please minimize freeze-thaw cycles.
Sequence	QQNPPKNREA TVNGEENGAH EINNHSKPME IDGDVEIPPN KATVLRGHES EVFICAWNPV SDLLASGSGD STARIWNLNE NSNGGSTQLV LRHCIREGGH DVPSNKDVTS LDWNSDGTLL AMGSYDGFAR

image



Background

Alternative Names	F-box-like/WD repeat-containing protein TBL1Y (Transducin beta-like protein 1Y) (Transducin-beta-like protein 1, Y-linked)
--------------------------	--

Note

For Research Use Only , Not for Diagnostic Use