

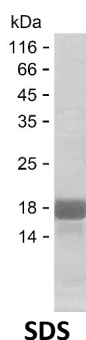
Product Name: Recombinant Human KCTD1 Protein
Catalog #: PEH10402



Summary

Name	KCTD1_HUMAN
Purity	Greater than 85% as determined by reducing SDS-PAGE
Endotoxin level	Please contact with the lab for this information
Tag	C-His
Accession #	Q719H9
Host	E.coli
Species	Human
Molecular Mass	19 kDa
Buffer	Phosphate buffered saline
Shipping	The product is shipped on dry ice/polar packs. Upon receipt, store it immediately at the temperature listed below.
Stability&Storage	Store at $\leq -70^{\circ}\text{C}$, stable for 12 months after receipt. Store at $\leq -70^{\circ}\text{C}$, stable for 3 months under sterile conditions after opening. Please minimize freeze-thaw cycles.
Sequence	TPAQLTKSNA PVHIDVGGHM YTSSLATLTK YPESRIGRLF DGTEPIVLDS LKQHYFIDRD GQMFYILNF LRYSKLLIPD DFKDYTLLEYE EAKYFQLQPM LLEMERWKQD RETGRFSRPC ECLVVRVAPD LGERITLSGD KSLIEEVFPE

image



Background

Alternative Names BTB/POZ domain-containing protein KCTD1 (Potassium channel tetramerization domain-containing protein 1)

Note

For Research Use Only , Not for Diagnostic Use