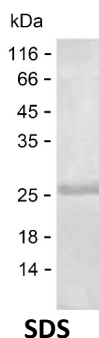


Summary

Name	KDM3B_HUMAN
Purity	Greater than 85% as determined by reducing SDS-PAGE
Endotoxin level	Please contact with the lab for this information
Tag	C-His
Accession #	Q7LBC6
Host	E.coli
Species	Human
Molecular Mass	22 kDa
Buffer	Phosphate buffered saline
Shipping	The product is shipped on dry ice/polar packs. Upon receipt, store it immediately at the temperature listed below.
Stability&Storage	Store at $\leq -70^{\circ}\text{C}$, stable for 12 months after receipt. Store at $\leq -70^{\circ}\text{C}$, stable for 3 months under sterile conditions after opening. Please minimize freeze-thaw cycles.
Sequence	LISDQKLQEI FSRGPYSVQG HRVKIQPEG EEGWLYGVVS HQDSITRLME VSVTESGEIK SVDPRLIHVM LMDNSAPQSE GGTLKAVKSS KGKKKRESIE GKDGRRRKSA SDGCDPASK KLKGDRGEVD SNGSDGGEAS RGPWKGGNAS GEPGLDQRAK QPPSTFVPQI NRNIRFATYT KENGRTLVVQ

image



Background

Alternative Names	Lysine-specific demethylase 3B (EC 1.14.11.65) (JmjC domain-containing histone demethylation protein 2B) (Jumonji domain-containing protein 1B) (Nuclear protein 5qNCA) ([histone H3]-dimethyl-L-lysine(9) demethylase 3B)
--------------------------	--

Note

Product Name: Recombinant Human KDM3B Protein
Catalog #: PEH10333



For Research Use Only , Not for Diagnostic Use