

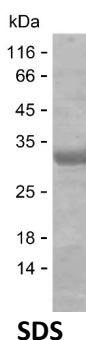
Product Name: Recombinant Human WEE2 Protein
Catalog #: PEH10313



Summary

Name	WEE2_HUMAN
Purity	Greater than 85% as determined by reducing SDS-PAGE
Endotoxin level	Please contact with the lab for this information
Tag	C-His
Accession #	POC1S8
Host	E.coli
Species	Human
Molecular Mass	23 kDa
Buffer	Phosphate buffered saline
Shipping	The product is shipped on dry ice/polar packs. Upon receipt, store it immediately at the temperature listed below.
Stability&Storage	Store at $\leq -70^{\circ}\text{C}$, stable for 12 months after receipt. Store at $\leq -70^{\circ}\text{C}$, stable for 3 months under sterile conditions after opening. Please minimize freeze-thaw cycles.
Sequence	RQQLNFSYCE ETEIEGQKKV EESREASSQT PEKGEVQDSE AKGTPPWTPPL SNVHELDTSS EKDKESPDQI LRTPVSHPLK CPETPAQPDS RSKLLPSDSP STPKTMLSRL VISPTGKLPS RGPKHLKLTP APLKDEMTSL ALVNINPFTP ESYKKLFLQS GGKRRIRGDL EEAGPEEGKG GLPAKRCVLR

image



Background

Alternative Names Wee1-like protein kinase 2 (EC 2.7.10.2) (Wee1-like protein kinase 1B) (Wee1B kinase)

Note

For Research Use Only , Not for Diagnostic Use

Product Name: Recombinant Human WEE2 Protein
Catalog #: PEH10313

