

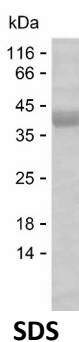
Product Name: Recombinant Human NSL1 Protein
Catalog #: PEH10282



Summary

Name	NSL1_HUMAN
Purity	Greater than 85% as determined by reducing SDS-PAGE
Endotoxin level	Please contact with the lab for this information
Tag	C-His
Accession #	Q96IY1
Host	E.coli
Species	Human
Molecular Mass	30 kDa
Buffer	Phosphate buffered saline
Shipping	The product is shipped on dry ice/polar packs. Upon receipt, store it immediately at the temperature listed below.
Stability&Storage	Store at $\leq -70^{\circ}\text{C}$, stable for 12 months after receipt. Store at $\leq -70^{\circ}\text{C}$, stable for 3 months under sterile conditions after opening. Please minimize freeze-thaw cycles.
Sequence	DPPWDKELAA GTESQALVSA TPREDFRVRC TSKRAVTEML QLCGRFVQKL GDALPEEIRE PALRDAQWTF ESAVQENISI NGQAWQEASD NCFMDSDIKV LEDQFDEIIV DIATKRKQYP RKILECVIKT IKAKQEILKQ YHPVVHPLDL KYDPDPAPHM ENLKCRGETV AKEISEAMKS LPALIEQGEG FSQVLRMQPV IHLQRIHQEV FSSCHRKPDA KPENFITQIE TPTETASRK TSDMVLKRKQ

image



Background

Alternative Names Kinetochores-associated protein NSL1 homolog

Note

Product Name: Recombinant Human NSL1 Protein
Catalog #: PEH10282



For Research Use Only , Not for Diagnostic Use