

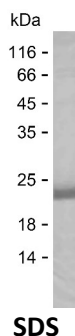
Product Name: Recombinant Human RSPH10B2 Protein
Catalog #: PEH10200



Summary

Name	R10B2_HUMAN
Purity	Greater than 85% as determined by reducing SDS-PAGE
Endotoxin level	Please contact with the lab for this information
Tag	C-His
Accession #	B2RC85
Host	E.coli
Species	Human
Molecular Mass	22 kDa
Buffer	Phosphate buffered saline
Shipping	The product is shipped on dry ice/polar packs. Upon receipt, store it immediately at the temperature listed below.
Stability&Storage	Store at $\leq -70^{\circ}\text{C}$, stable for 6 months after receipt. Store at $\leq -70^{\circ}\text{C}$, stable for 3 months under sterile conditions after opening. Please minimize freeze-thaw cycles.
Sequence	KGEKSARSPS SLSDNLDFSK QDGNTRQEM SPAGVPLLGM QLNEVKPKKD RQNVQQNEDA SQYEEISLTK LIVESYEGEK VRGLYEGEF AAFQGGCTYR GMFSEGLMHG QGTIYWADGL KYEGDFVKNV PMNHGVYTWP DGSMYEGEVV NGMRNGFGMF KCSTQPVSYI

image



Background

Alternative Names Radial spoke head 10 homolog B2

Note

For Research Use Only , Not for Diagnostic Use



Product Name: Recombinant Human RSPH10B2 Protein
Catalog #: PEH10200
