

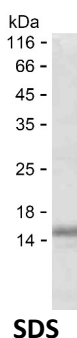
Product Name: Recombinant Human CLLU1-AS1 Protein
Catalog #: PEH10185



Summary

Name	CLU10_HUMAN
Purity	Greater than 85% as determined by reducing SDS-PAGE
Endotoxin level	Please contact with the lab for this information
Tag	C-His
Accession #	Q5K130
Host	E.coli
Species	Human
Molecular Mass	12 kDa
Buffer	Phosphate buffered saline
Shipping	The product is shipped on dry ice/polar packs. Upon receipt, store it immediately at the temperature listed below.
Stability&Storage	Store at $\leq -70^{\circ}\text{C}$, stable for 6 months after receipt. Store at $\leq -70^{\circ}\text{C}$, stable for 3 months under sterile conditions after opening. Please minimize freeze-thaw cycles.
Sequence	ECLKTATDSL QTVQPSISQT CTSYGPALGA PLPGRNEVAL LTSLPPNYEI SEGKPRAISA YVRAGKGNVT RRRKKTHLGN DDGKKEAQEK

image



Background

Alternative Names Putative uncharacterized protein CLLU1-AS1 (CLLU1 antisense RNA 1) (Chronic lymphocytic leukemia up-regulated protein 1 opposite strand transcript protein)

Note

For Research Use Only , Not for Diagnostic Use