

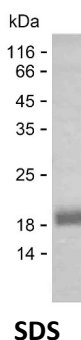
Product Name: Recombinant Human METTL15P1 Protein
Catalog #: PEH10171



Summary

Name	ME15P_HUMAN
Purity	Greater than 85% as determined by reducing SDS-PAGE
Endotoxin level	Please contact with the lab for this information
Tag	C-His
Accession #	P0C7V9
Host	E.coli
Species	Human
Molecular Mass	18 kDa
Buffer	Phosphate buffered saline
Shipping	The product is shipped on dry ice/polar packs. Upon receipt, store it immediately at the temperature listed below.
Stability&Storage	Store at $\leq -70^{\circ}\text{C}$, stable for 12 months after receipt. Store at $\leq -70^{\circ}\text{C}$, stable for 3 months under sterile conditions after opening. Please minimize freeze-thaw cycles.
Sequence	QTQVQELHRS QDRDFETMAK LHIPVMVDEV VHCLSPQKGQ IFLDMTFGSG GHTKAILQKE SDIVLYALDR DPTAYALAEH LSELYPKQIR AMLGQFSQAE ALLMKAGVQP GTFDGVLM DL GCSSMQLDTP ERGSSLRKDG PLDIRMDGGR

image



Background

Alternative Names	Putative methyltransferase-like protein 15P1 (EC 2.1.1.-) (Methyltransferase 5 domain-containing protein 2) (Methyltransferase-like protein 15 pseudogene 1)
--------------------------	--

Note

For Research Use Only , Not for Diagnostic Use

Product Name: Recombinant Human METTL15P1 Protein
Catalog #: PEH10171

