

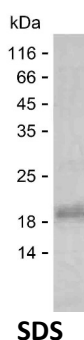
Product Name: Recombinant Human PRR15L Protein
Catalog #: PEH10088



Summary

Name	PR15L_HUMAN
Purity	Greater than 85% as determined by reducing SDS-PAGE
Endotoxin level	Please contact with the lab for this information
Tag	C-His
Accession #	Q9BU68
Host	E.coli
Species	Human
Molecular Mass	11 kDa
Buffer	Phosphate buffered saline
Shipping	The product is shipped on dry ice/polar packs. Upon receipt, store it immediately at the temperature listed below.
Stability&Storage	Store at $\leq -70^{\circ}\text{C}$, stable for 12 months after receipt. Store at $\leq -70^{\circ}\text{C}$, stable for 3 months under sterile conditions after opening. Please minimize freeze-thaw cycles.
Sequence	TFLRKKKSTP KVLYEIPDTY AQTEGDAEPP RPDAGGPNSD FNTRLEKIVD KSTKGKHKVKV SNSGRFKEKK KVRATLAENP NLFDDHEEGR

image



Background

Alternative Names Proline-rich protein 15-like protein (Protein ATAD4)

Note

For Research Use Only , Not for Diagnostic Use