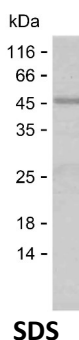


Summary

Name	GOGA2_HUMAN
Purity	Greater than 85% as determined by reducing SDS-PAGE
Endotoxin level	Please contact with the lab for this information
Tag	C-His
Accession #	Q08379
Host	E.coli
Species	Human
Molecular Mass	44 kDa
Buffer	Phosphate buffered saline
Shipping	The product is shipped on dry ice/polar packs. Upon receipt, store it immediately at the temperature listed below.
Stability&Storage	Store at $\leq -70^{\circ}\text{C}$, stable for 12 months after receipt. Store at $\leq -70^{\circ}\text{C}$, stable for 3 months under sterile conditions after opening. Please minimize freeze-thaw cycles.
Sequence	QHAARQKEGE SEDLASRLQY SRRRVGELER ALSAVSTQQK KADRYNKELT KERDALRLEL YKNTQSNEDL KQEKSELEEK LRVLVTEKAG MQLNLEELQK KLEMTELLLQ QFSSRCEAPD ANQQLQQAME ERAQLEAHLG QVMESVRQLQ MERDKYAENL KGESAMWRQR MQQMSEQVHT LREEKECSMS RVQELETSLA ELRNQMAEPP PPEPPAGPSE VEQQLQAEAE HLRKELEGLA GQLQAQVQDN EGLSRLNREQ EERLLELERA AELWGEQAEA RRQILETMQN DRTTISRALS QNRELKEQLA ELQSGFVKLT NENMEITSAL QSEQHVKREL GKKLGELEEK LSELKETVEL

image



Background

Alternative Names Golgin subfamily A member 2 (130 kDa cis-Golgi matrix protein) (GM130)

Product Name: Recombinant Human GOLGA2 Protein
Catalog #: PEH10029



(GM130 autoantigen) (Golgin-95)

Note

For Research Use Only , Not for Diagnostic Use