

Product Name: Recombinant Human KPNB1 (N-6His)
Catalog #: PEH0942

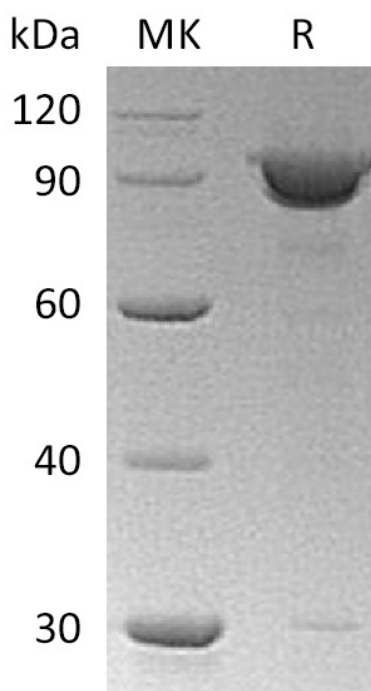


Summary

Name	Importin Subunit Beta-1/KPNB1
Purity	Greater than 95% as determined by reducing SDS-PAGE
Endotoxin level	<1 EU/μg as determined by LAL test.
Construction	Recombinant Human Importin Subunit Beta-1 is produced by our E.coli expression system and the target gene encoding Met1-Ala876 (Gln559His) is expressed with a 6His tag at the N-terminus.
Accession #	Q14974
Host	E.coli
Species	Human
Predicted Molecular Mass	98.6 KDa
Formulation	Supplied as a 0.2 μm filtered solution of 20mM Tris-HCl, 1mM DTT, 30% Glycerol, 100mM NaCl, pH 8.0.
Shipping	The product is shipped on dry ice/polar packs. Upon receipt, store it immediately at the temperature listed below.
Stability&Storage	Store at ≤-70°C, stable for 6 months after receipt. Store at ≤-70°C, stable for 3 months under sterile conditions after opening. Please minimize freeze-thaw cycles.
Reconstitution	

SDS-PAGE image

Product Name: Recombinant Human KPNB1 (N-6His)
Catalog #: PEH0942



Alternative Names

Importin subunit beta-1; Importin-90; Karyopherin subunit beta-1; Nuclear factor p97; Pore targeting complex 97 kDa subunit; PTAC97; KPNB1; NTF97

Background

Importin subunit beta-1(KPNB1) is a member of the importin beta family. KPNB1 contains 1 importin N-terminal domain and 19 HEAT repeats. It is involved in nucleocytoplasmic transport, a signal- and energy-dependent process, takes place through nuclear pore complexes embedded in the nuclear envelope. Its functions in nuclear protein import, either in association with an adapter protein, like an importin-alpha subunit, which binds to nuclear localization signals (NLS) in cargo substrates, or by acting as autonomous nuclear transport receptor. The import of proteins containing a classical nuclear localization signal (NLS) requires the NLS import receptor, a heterodimer of importin alpha and beta subunits. Each of these subunits is part of the karyopherin family of proteins. Importin alpha binds the NLS-containing cargo in the cytoplasm and importin beta docks the complex at the cytoplasmic side of the nuclear pore complex. It mediates autonomously the nuclear import of ribosomal proteins RPL23A, RPS7 and RPL5.

Note

For Research Use Only , Not for Diagnostic Use.