

**Product Name: Recombinant Human IGF2BP-2 (N-T7 ,C-6His)**  
**Catalog #: PEH0941**



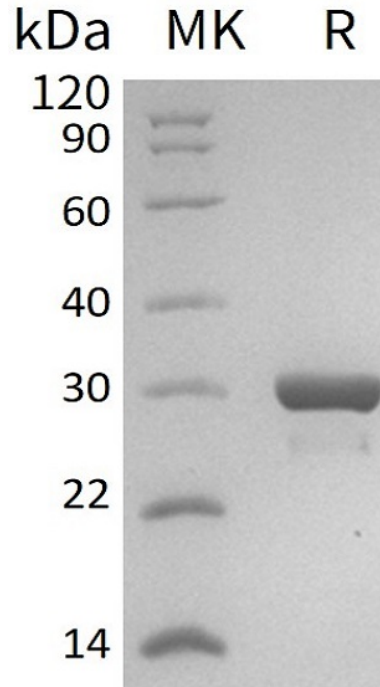
---

## Summary

<b>Name</b>	IMP2/IGF2 mRNA-binding protein 2
<b>Purity</b>	Greater than 95% as determined by reducing SDS-PAGE
<b>Endotoxin level</b>	<1 EU/μg as determined by LAL test.
<b>Construction</b>	Recombinant Human Insulin-Like Growth Factor 2 mRNA-Binding Protein 2 is produced by our E.coli expression system and the target gene encoding Met1-Thr220 is expressed with a T7 tag at the N-terminus, 6His tag at the C-terminus.
<b>Accession #</b>	Q9Y6M1
<b>Host</b>	E.coli
<b>Species</b>	Human
<b>Predicted Molecular Mass</b>	27.2 KDa
<b>Formulation</b>	Lyophilized from a 0.2 μm filtered solution of 20mM Tris-HCl, 15% Trehalose, 150mM NaCl, 0.1% Tween80, pH 8.5.
<b>Shipping</b>	The product is shipped at ambient temperature. Upon receipt, store it immediately at the temperature listed below.
<b>Stability&amp;Storage</b>	Lyophilized protein should be stored at ≤ -20°C, stable for one year after receipt. Reconstituted protein solution can be stored at 2-8°C for 2-7 days. Aliquots of reconstituted samples are stable at ≤ -20°C for 3 months.
<b>Reconstitution</b>	Always centrifuge tubes before opening. Do not mix by vortex or pipetting. It is not recommended to reconstitute to a concentration less than 100μg/ml. Dissolve the lyophilized protein in distilled water. Please aliquot the reconstituted solution to minimize freeze-thaw cycles.

## SDS-PAGE image

Product Name: Recombinant Human IGF2BP-2 (N-T7 ,C-6His)  
Catalog #: PEH0941



### Alternative Names

Insulin-Like Growth Factor 2 mRNA-Binding Protein 2; IGF2 mRNA-Binding Protein 2; IMP-2; Hepatocellular Carcinoma Autoantigen p62; IGF-II mRNA-Binding Protein 2; VICKZ Family Member 2; IGF2BP2; IMP2; VICKZ2

### Background

Insulin-Like Growth Factor 2 mRNA-Binding Protein 2 (IGFBP2) belongs to the RRM IMP/VICKZ family. IGFBP2 is a cytoplasmic protein and contains four KH domains and two RRM (RNA recognition motif) domains. IGF2BP2 binds to the 5'-UTR of the Insulin-Like Growth Factor 2 (IGF2) mRNA. This binding is isoform-specific. IGF2BP2 may regulate translation of target mRNAs. Genetic variation at the IGF2BP2 gene has been associated with type 2 diabetes (T2D) by genome-wide association studies and by replication analyses.

### Note

For Research Use Only , Not for Diagnostic Use.