

Product Name: Recombinant Human IL-6
Catalog #: PEH0933

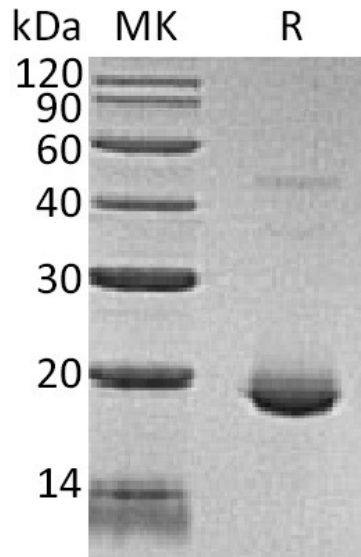


Summary

Name	IL-6
Purity	Greater than 95% as determined by reducing SDS-PAGE
Endotoxin level	<0.01 EU/μg as determined by LAL test.
Construction	Recombinant Human Interleukin-6 is produced by our E.coli expression system and the target gene encoding Val30-Met212 is expressed.
Accession #	P05231
Host	E.coli
Species	Human
Predicted Molecular Mass	20.9 KDa
Formulation	Lyophilized from a 0.2 μm filtered solution of 20mM PB, 5% Sucrose, 4% Mannitol, 0.05% PS-80, pH7.4.
Shipping	The product is shipped at ambient temperature. Upon receipt, store it immediately at the temperature listed below.
Stability&Storage	Lyophilized protein should be stored at ≤ -20°C, stable for one year after receipt. Reconstituted protein solution can be stored at 2-8°C for 2-7 days. Aliquots of reconstituted samples are stable at ≤ -20°C for 3 months.
Reconstitution	Always centrifuge tubes before opening. Do not mix by vortex or pipetting. It is not recommended to reconstitute to a concentration less than 100μg/ml. Dissolve the lyophilized protein in distilled water. Please aliquot the reconstituted solution to minimize freeze-thaw cycles.

SDS-PAGE image

Product Name: Recombinant Human IL-6
Catalog #: PEH0933



Alternative Names

Interleukin-6; IL-6; B-Cell Stimulatory Factor 2; BSF-2; CTL Differentiation Factor; CDF; Hybridoma Growth Factor; Interferon Beta-2; IFN-Beta-2; IL6; IFNB2

Background

Cytokines of the IL6/GCSF/MGF family are glycoproteins of about 170 to 180 amino acid residues that contain four conserved cysteine residues involved in two disulfide bonds. They have a compact, globular fold (similar to other interleukins), stabilized by the 2 disulfide bonds. One half of the structure is dominated by a 4 alpha-helix bundle with a left-handed twist; the helices are anti-parallel, with 2 overhand connections, which fall into a 2-stranded anti-parallel beta-sheet. The fourth alpha helix is important to the biological activity of the molecule. Interleukin-6 (IL-6) is an important proinflammatory and immunoregulatory cytokine expressed by various cells. Interleukin-6 has been shown to inhibit the growth of early stage and to promote the proliferation of advanced stage melanoma cells in vitro.

Note

For Research Use Only , Not for Diagnostic Use.