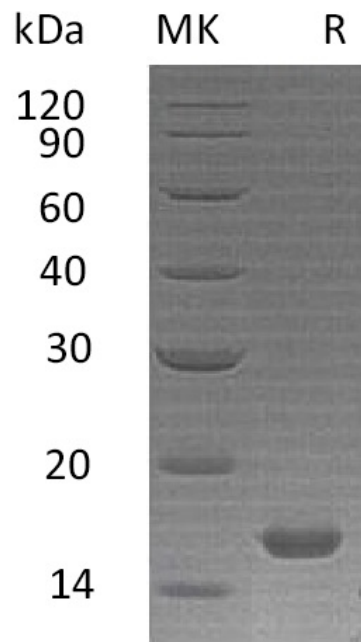


Summary

Name	IL-21/Interleukin-21/IL21
Purity	Greater than 95% as determined by reducing SDS-PAGE
Endotoxin level	<0.01 EU/μg as determined by LAL test.
Construction	Recombinant Human Interleukin-21 is produced by our E.coli expression system and the target gene encoding Gln30-Ser162 is expressed.
Accession #	Q9HBE4
Host	E.coli
Species	Human
Predicted Molecular Mass	15.6 KDa
Formulation	Lyophilized from a 0.2 μm filtered solution of 20mM PB, 150mM NaCl, pH 7.4.
Shipping	The product is shipped at ambient temperature. Upon receipt, store it immediately at the temperature listed below.
Stability&Storage	Lyophilized protein should be stored at ≤ -20°C, stable for one year after receipt. Reconstituted protein solution can be stored at 2-8°C for 2-7 days. Aliquots of reconstituted samples are stable at ≤ -20°C for 3 months.
Reconstitution	Always centrifuge tubes before opening. Do not mix by vortex or pipetting. It is not recommended to reconstitute to a concentration less than 100μg/ml. Dissolve the lyophilized protein in distilled water. Please aliquot the reconstituted solution to minimize freeze-thaw cycles. Always centrifuge tubes before opening. Do not mix by vortex or pipetting. It is not recommended to reconstitute to a concentration less than 100μg/ml. Dissolve the lyophilized protein in distilled water. Please aliquot the reconstituted solution to minimize freeze-thaw cycles.

SDS-PAGE image

Product Name: Recombinant Human IL-21
Catalog #: PEH0903



Alternative Names

Interleukin-21; IL-21; Za11; IL21

Background

IL-21 induces the production of IgG1 and IgG3 in B-cells. IL-21 may promote the transition between innate and adaptive immunity. IL-21 may have a role in proliferation and maturation of natural killer cells in synergy with IL15. IL-21 stimulates interferon gamma production in T-cells and natural killer cells by synergy with IL15 and IL18. Dysregulation of IL-21 has a role in multiple immune-mediated diseases including lupus, psoriasis and chronic inflammatory diseases.

Note

For Research Use Only , Not for Diagnostic Use.