

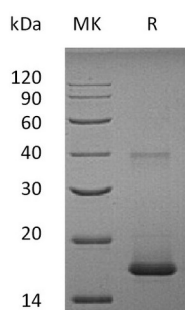
Product Name: Recombinant Human IL-1F10
Catalog #: PEH0889



Summary

Name	IL-1F10/IL-1HY2/IL-38/IL-1 theta
Purity	Greater than 95% as determined by reducing SDS-PAGE
Endotoxin level	<1 EU/μg as determined by LAL test.
Construction	Recombinant Human Interleukin-1 Family Member 10 is produced by our E.coli expression system and the target gene encoding Met1-Trp152 is expressed.
Accession #	AAI03967.1
Host	E.coli
Species	Human
Predicted Molecular Mass	16.9 KDa
Formulation	Lyophilized from a 0.2 μm filtered solution of 20mM PB, 150mM NaCl, pH 6.0.
Shipping	The product is shipped at ambient temperature. Upon receipt, store it immediately at the temperature listed below.
Stability&Storage	Lyophilized protein should be stored at ≤ -20°C, stable for one year after receipt. Reconstituted protein solution can be stored at 2-8°C for 2-7 days. Aliquots of reconstituted samples are stable at ≤ -20°C for 3 months.
Reconstitution	Always centrifuge tubes before opening. Do not mix by vortex or pipetting. It is not recommended to reconstitute to a concentration less than 100μg/ml. Dissolve the lyophilized protein in distilled water. Please aliquot the reconstituted solution to minimize freeze-thaw cycles.

SDS-PAGE image



Background

Product Name: Recombinant Human IL-1F10
Catalog #: PEH0889



Alternative Names

Interleukin-1 Family Member 10; IL-1F10; FIL1 Theta; Interleukin-1 HY2; IL-1HY2; Interleukin-1 Theta; IL-1 Theta; IL1F10; FIL1T; IL1HY2

Background

Human Interleukin 1 Family Member 10 (IL-1F10) is thought to participate in a network of Interleukin 1 cytokine family members to regulate adapted and innate immune responses. IL-1F10 was expressed in fetal skin, spleen and tonsil, mostly in the basal epithelia of skin and in proliferating B-cells of the tonsil. IL-1F10 binds soluble IL-1 receptor type 1 and may be implicated in regulating adapted and innate immune responses. Two alternatively spliced transcript variants encoding the same protein have been reported.

Note

For Research Use Only , Not for Diagnostic Use.