

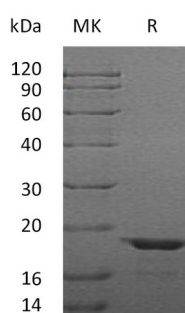
Product Name: Recombinant Human LGALSL (C-6His)
Catalog #: PEH0709



Summary

Name	Galectin-related protein/LGALSL/HSPC159/GRP
Purity	Greater than 95% as determined by reducing SDS-PAGE
Endotoxin level	<1 EU/μg as determined by LAL test.
Construction	Recombinant Human Galectin-Related Protein is produced by our E.coli expression system and the target gene encoding Ala2-Gly172 is expressed with a 6His tag at the C-terminus.
Accession #	Q3ZCW2
Host	E.coli
Species	Human
Predicted Molecular Mass	20 KDa
Formulation	Supplied as a 0.2 μm filtered solution of 20mM Tris-HCl, 100mM NaCl, pH 8.0.
Shipping	The product is shipped on dry ice/polar packs. Upon receipt, store it immediately at the temperature listed below.
Stability&Storage	Store at ≤-70°C, stable for 6 months after receipt. Store at ≤-70°C, stable for 3 months under sterile conditions after opening. Please minimize freeze-thaw cycles.
Reconstitution	

SDS-PAGE image



Background

Alternative Names	Galectin-Related Protein; Lectin Galactoside-Binding-Like Protein; LGALSL; GRP; HSPC159
Background	Galectin-Related Protein (LGALSL) is a 172 amino acid protein that contains one Galectin domain. LGALSL does not appear to bind carbohydrates or lactose as the

Product Name: Recombinant Human LGALSL (C-6His)
Catalog #: PEH0709



critical residues required for binding are not conserved. LGALSL may play a significant role in stimulating smooth muscle growth in developing alveolar wall vessels and the development of pulmonary capillaries.

Note

For Research Use Only , Not for Diagnostic Use.