

Product Name: Recombinant Human LGALS8
Catalog #: PEH0706

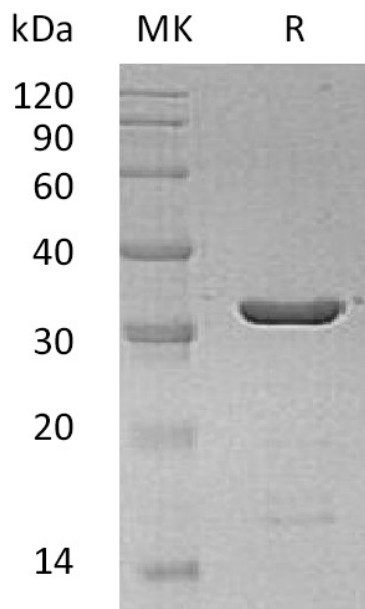


Summary

Name	Galectin-8
Purity	Greater than 95% as determined by reducing SDS-PAGE
Endotoxin level	<1 EU/μg as determined by LAL test.
Construction	Recombinant Human Galectin-8 is produced by our E.coli expression system and the target gene encoding Met1-Trp317 is expressed.
Accession #	O00214
Host	E.coli
Species	Human
Predicted Molecular Mass	35.8 KDa
Formulation	Lyophilized from a 0.2 μm filtered solution of PBS, pH 7.4.
Shipping	The product is shipped at ambient temperature. Upon receipt, store it immediately at the temperature listed below.
Stability&Storage	Lyophilized protein should be stored at ≤ -20°C, stable for one year after receipt. Reconstituted protein solution can be stored at 2-8°C for 2-7 days. Aliquots of reconstituted samples are stable at ≤ -20°C for 3 months.
Reconstitution	Always centrifuge tubes before opening. Do not mix by vortex or pipetting. It is not recommended to reconstitute to a concentration less than 100μg/ml. Dissolve the lyophilized protein in distilled water. Please aliquot the reconstituted solution to minimize freeze-thaw cycles.

SDS-PAGE image

Product Name: Recombinant Human LGALS8
Catalog #: PEH0706



Alternative Names

Galectin-8; Gal-8; Po66 Carbohydrate-Binding Protein; Po66-CBP; Prostate Carcinoma Tumor Antigen 1; PCTA-1; LGALS8

Background

The Galectin family of proteins, with specificity for N-acetyllactosamine-containing glycoproteins, consists of beta-galactoside binding lectins containing homologous carbohydrate recognition domains (CRDs). They also possess hemagglutination activity, which is attributable to their bivalent carbohydrate binding properties. Galectins are active both intracellularly and extracellularly. Although they are localized primarily in the cytoplasm and lack a classical signal peptide, galectins can also be secreted by one or more unidentified, non-classical, secretory pathways. They have diverse effects on many cellular functions including adhesion, migration, polarity, chemotaxis, proliferation, apoptosis, and differentiation. Galectins may therefore play a key role in many pathological states, including autoimmune diseases, allergic reactions, inflammation, tumor cell metastasis, atherosclerosis, and diabetic complications. The galectins have been classified into the prototype galectins (1, 2, 5, 7, 10, 11, 13, 14), which contain one CRD and exist either as a monomer or a noncovalent homodimer. The chimeric galectins (Galectin 3) containing one CRD linked to a nonlectin domain, and the tandem repeat Galectins (4, 6, 8, 9, 12) consisting of two CRDs joined by a linker peptide. Galectins lack a classical signal peptide and can be localized to the cytosolic compartments where they have intracellular functions. However, via one or more as yet unidentified nonclassical secretory pathways, galectins can also be secreted to function extracellularly. Individual members of the galectin family have different tissue distribution profiles and exhibit subtle differences in their carbohydrate-binding specificities. Each family member may preferentially bind to a unique subset of cell surface glycoproteins.

Note

For Research Use Only, Not for Diagnostic Use.