

**Product Name: Recombinant Human FTH (N-6His)**  
**Catalog #: PEH0636**

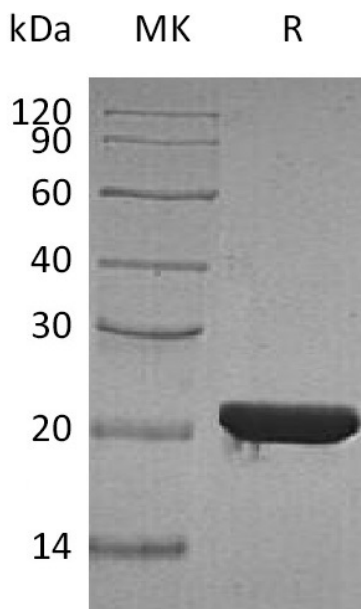


## Summary

<b>Name</b>	Ferritin heavy chain/FTH1
<b>Purity</b>	Greater than 95% as determined by reducing SDS-PAGE
<b>Endotoxin level</b>	<1 EU/μg as determined by LAL test.
<b>Construction</b>	Recombinant Human Ferritin Heavy Chain is produced by our E.coli expression system and the target gene encoding Met1-Ser183 is expressed with a 6His tag at the N-terminus.
<b>Accession #</b>	P02794
<b>Host</b>	E.coli
<b>Species</b>	Human
<b>Predicted Molecular Mass</b>	23.4 KDa
<b>Formulation</b>	Lyophilized from a 0.2 μm filtered solution of 20mM Citrate, 150mM NaCl, 5% Sucrose, 5% Trehalose, 0.02% Tween80, 1mM EDTA, pH 4.0
<b>Shipping</b>	The product is shipped at ambient temperature. Upon receipt, store it immediately at the temperature listed below.
<b>Stability&amp;Storage</b>	Lyophilized protein should be stored at ≤ -20°C, stable for one year after receipt. Reconstituted protein solution can be stored at 2-8°C for 2-7 days. Aliquots of reconstituted samples are stable at ≤ -20°C for 3 months.
<b>Reconstitution</b>	Always centrifuge tubes before opening. Do not mix by vortex or pipetting. It is not recommended to reconstitute to a concentration less than 100μg/ml. Dissolve the lyophilized protein in distilled water. Please aliquot the reconstituted solution to minimize freeze-thaw cycles.

## SDS-PAGE image

**Product Name: Recombinant Human FTH (N-6His)**  
**Catalog #: PEH0636**



### **Alternative Names**

Ferritin heavy chain; FTH1; FTH; FTHL6; Ferritin H subunit; Cell proliferation-inducing gene 15 protein

### **Background**

Ferritin heavy polypeptide 1(FTH1), is a ubiquitous intracellular protein which stores iron in a soluble, non-toxic, readily available form. FTH1 has ferroxidase activity and is important for iron homeostasis. Iron is taken up in the ferrous form and deposited as ferric hydroxides after oxidation. Ferritin is composed of 24 subunits of the light and heavy ferritin chains. It plays a role in delivery of iron to cells and mediates iron uptake in capsule cells of the developing kidney. Variation of ferritin subunit composition may affect iron absorption and release in different tissues. Deficiency of ferritin proteins may cause several neurodegenerative diseases. Almost all living organisms can produce this protein, including algae, bacteria, higher plants, and animals.

### **Note**

For Research Use Only , Not for Diagnostic Use.