

Product Name: Recombinant Human CTH
Catalog #: PEH0489

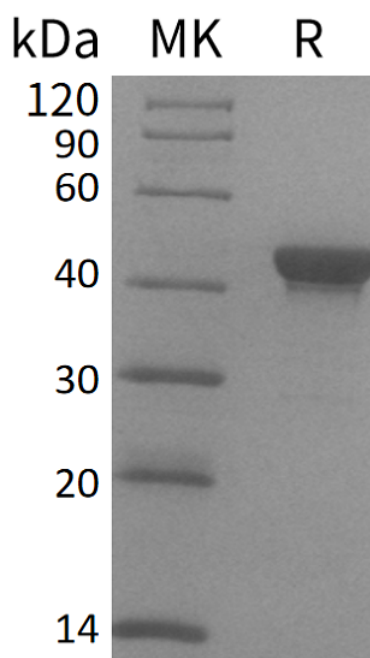


Summary

Name	Cystathionine gamma-lyase/CTH
Purity	Greater than 95% as determined by reducing SDS-PAGE
Endotoxin level	<1 EU/μg as determined by LAL test.
Construction	Recombinant Human Cystathionine Gamma-Lyase is produced by our E.coli expression system and the target gene encoding Met1-Ser405 is expressed.
Accession #	P32929
Host	E.coli
Species	Human
Predicted Molecular Mass	44.7 KDa
Formulation	Supplied as a 0.2 μm filtered solution of 20mM Tris-HCl, 8% Sucrose, 0.05% Tween 80, pH8.0.
Shipping	The product is shipped on dry ice/polar packs. Upon receipt, store it immediately at the temperature listed below.
Stability&Storage	Store at ≤-70°C, stable for 6 months after receipt. Store at ≤-70°C, stable for 3 months under sterile conditions after opening. Please minimize freeze-thaw cycles.
Reconstitution	

SDS-PAGE image

Product Name: Recombinant Human CTH
Catalog #: PEH0489



Alternative Names

Cystathionine Gamma-Lyase; Cysteine-Protein Sulfhydrase; Gamma-Cystathionase; CTH

Background

Cystathionine Gamma-Lyase (CTH) belongs to the trans-sulfuration enzymes family. CTH exists as a homotetramer and interacts with CALM in a calcium-dependent manner. CTH breaks down cystathionine into cysteine, ammonia and 2-oxobutanoate. CTH catalyzes the last step in the trans-sulfuration pathway from methionine to cysteine and has broad substrate specificity. Defects in CTH will lead to cystathioninuria, which is an autosomal recessive phenotype characterized by abnormal accumulation of plasma cystathionine.

Note

For Research Use Only , Not for Diagnostic Use.