

Product Name: Recombinant Human C8 gamma (N-6His)
Catalog #: PEH0435

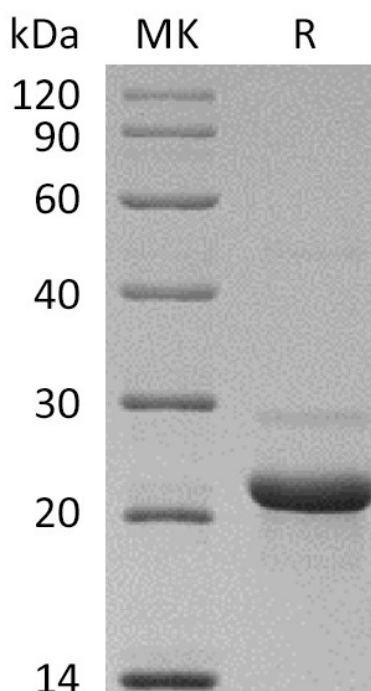


Summary

Name	Complement component C8 gamma chain/C8G
Purity	Greater than 95% as determined by reducing SDS-PAGE
Endotoxin level	<1 EU/μg as determined by LAL test.
Construction	Recombinant Human Complement Component C8 Gamma Chain is produced by our E.coli expression system and the target gene encoding Gln21-Arg202 is expressed with a 6His tag at the N-terminus.
Accession #	AAI13627.1
Host	E.coli
Species	Human
Predicted Molecular Mass	22.6 KDa
Formulation	Supplied as a 0.2 μm filtered solution of 20mM PB, 150mM NaCl, pH 7.4.
Shipping	The product is shipped on dry ice/polar packs. Upon receipt, store it immediately at the temperature listed below.
Stability&Storage	Store at ≤-70°C, stable for 6 months after receipt. Store at ≤-70°C, stable for 3 months under sterile conditions after opening. Please minimize freeze-thaw cycles.
Reconstitution	

SDS-PAGE image

Product Name: Recombinant Human C8 gamma (N-6His)
Catalog #: PEH0435



Alternative Names

Complement component C8 gamma chain; C8G

Background

Complement component C8 is a constituent of the membrane attack complex, C8 alpha, C8 beta and C8G. C8G is a secreted protein and consists a disulfide-linked C8 alpha-gamma heterodimer and a non-covalently associated C8 beta chain. C8 alpha and C8 beta play an important role in complement-mediated bacterial killing together. C8 is involved in the formation of Membrane Attack Complex on bacterial cell membranes. C8 binds to the C5B-7 complex, forming the C5B-8 complex. C5-B8 binds C9 and acts as a catalyst in the polymerization of C9. The gamma subunit seems to be able to bind retinol. Patients lacking C8 are susceptible to certain bacterial infections.

Note

For Research Use Only , Not for Diagnostic Use.