

Product Name: Recombinant Human CLIC3 (C-6His)
Catalog #: PEH0417

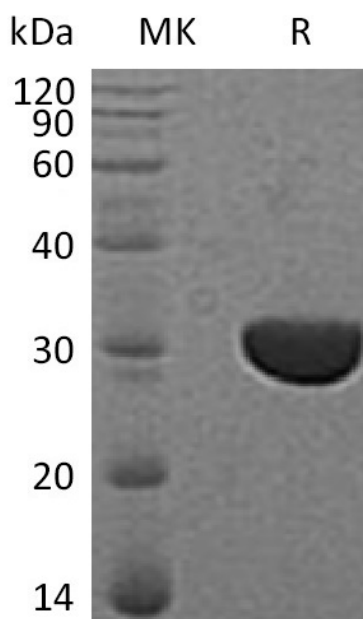


Summary

Name	CLIC3/Chloride intracellular channel protein 3
Purity	Greater than 95% as determined by reducing SDS-PAGE
Endotoxin level	<1 EU/μg as determined by LAL test.
Construction	Recombinant Human Chloride Intracellular Channel Protein 3 is produced by our E.coli expression system and the target gene encoding Met1-Arg236 is expressed with a 6His tag at the C-terminus.
Accession #	O95833
Host	E.coli
Species	Human
Predicted Molecular Mass	27.7 KDa
Formulation	Supplied as a 0.2 μm filtered solution of 20mM Tris-HCl, 200mM Sucrose, 0.05% Tween 80 (w/v), pH 8.5.
Shipping	The product is shipped on dry ice/polar packs. Upon receipt, store it immediately at the temperature listed below.
Stability&Storage	Store at ≤-70°C, stable for 6 months after receipt. Store at ≤-70°C, stable for 3 months under sterile conditions after opening. Please minimize freeze-thaw cycles.
Reconstitution	

SDS-PAGE image

Product Name: Recombinant Human CLIC3 (C-6His)
Catalog #: PEH0417



Alternative Names

Chloride intracellular channel protein 3; CLIC3

Background

Chloride intracellular channel protein 3 (CLIC3) is encoded by the CLIC3 gene. CLIC3 is a single-pass membrane protein which belongs to the chloride channel CLIC family. It contains one GST C-terminal domain and one GST N-terminal domain. Chloride intracellular channel protein 3 is highly expressed in the placenta, lung and heart, and low expressed in skeletal muscle, kidney and pancreas. Chloride intracellular channel protein 3 can insert into membranes and form chloride ion channels, and may participate in cellular growth control.

Note

For Research Use Only , Not for Diagnostic Use.