

Product Name: Recombinant Human CCL3
Catalog #: PEH0270

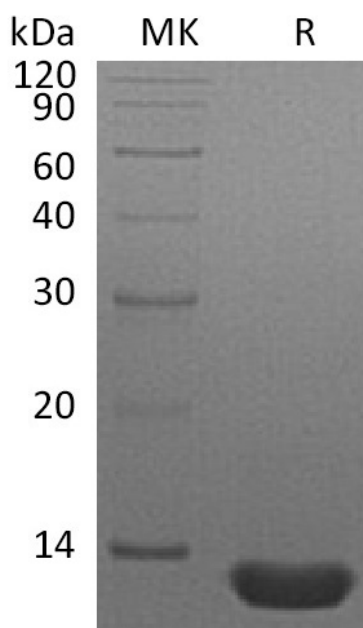


Summary

Name	CCL3/MIP-1 alpha/MIP-1a/C-C Motif Chemokine 3
Purity	Greater than 95% as determined by reducing SDS-PAGE
Endotoxin level	<1 EU/μg as determined by LAL test.
Construction	Recombinant Human C-C Motif Chemokine 3 is produced by our E.coli expression system and the target gene encoding Ser24-Ala92 is expressed.
Accession #	P10147
Host	E.coli
Species	Human
Predicted Molecular Mass	7.5 KDa
Formulation	Lyophilized from a 0.2 μm filtered solution of 20mM PB, 150mM NaCl, pH 7.4.
Shipping	The product is shipped at ambient temperature. Upon receipt, store it immediately at the temperature listed below.
Stability&Storage	Lyophilized protein should be stored at ≤ -20°C, stable for one year after receipt. Reconstituted protein solution can be stored at 2-8°C for 2-7 days. Aliquots of reconstituted samples are stable at ≤ -20°C for 3 months.
Reconstitution	Always centrifuge tubes before opening. Do not mix by vortex or pipetting. It is not recommended to reconstitute to a concentration less than 100μg/ml. Dissolve the lyophilized protein in distilled water. Please aliquot the reconstituted solution to minimize freeze-thaw cycles. Always centrifuge tubes before opening. Do not mix by vortex or pipetting. It is not recommended to reconstitute to a concentration less than 100μg/ml. Dissolve the lyophilized protein in distilled water. Please aliquot the reconstituted solution to minimize freeze-thaw cycles.

SDS-PAGE image

Product Name: Recombinant Human CCL3
Catalog #: PEH0270



Alternative Names

C-C Motif Chemokine 3; G0/G1 Switch Regulatory Protein 19-1; Macrophage Inflammatory Protein 1-Alpha; MIP-1-Alpha; PAT 464.1; SIS-Beta; Small-Inducible Cytokine A3; Tonsillar Lymphocyte LD78 Alpha Protein; CCL3; G0S19-1; MIP1A; SCYA3

Background

Human Chemokine (C-C Motif) Ligand 3 (CCL3) is a small cytokine belonging to the CC chemokine family. CCL3 is primarily expressed in T cells, B cells, and monocytes after antigen or mitogen stimulation. CCL3 exhibits chemoattractive and adhesive effects on lymphocytes. CCL3 exerts multiple effects on hematopoietic precursor cells and inhibits the proliferation of hematopoietic stem cells in vitro as well as in vivo. CCR1 and CCR5 have been identified as functional receptors for CCL3.

Note

For Research Use Only , Not for Diagnostic Use.