

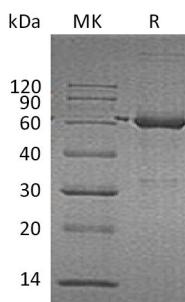
**Product Name: Recombinant Human CAT**  
**Catalog #: PEH0238**



## Summary

<b>Name</b>	Catalase/CAT
<b>Purity</b>	Greater than 95% as determined by reducing SDS-PAGE
<b>Endotoxin level</b>	<1 EU/μg as determined by LAL test.
<b>Construction</b>	Recombinant Human Catalase is produced by our E.coli expression system and the target gene encoding Ala2-Leu527 is expressed.
<b>Accession #</b>	P04040
<b>Host</b>	E.coli
<b>Species</b>	Human
<b>Predicted Molecular Mass</b>	59.7 KDa
<b>Formulation</b>	Supplied as a 0.2 μm filtered solution of PBS, pH 7.4.
<b>Shipping</b>	The product is shipped on dry ice/polar packs. Upon receipt, store it immediately at the temperature listed below.
<b>Stability&amp;Storage</b>	Store at ≤-70°C, stable for 6 months after receipt. Store at ≤-70°C, stable for 3 months under sterile conditions after opening. Please minimize freeze-thaw cycles.
<b>Reconstitution</b>	

## SDS-PAGE image



## Background

**Alternative Names** Catalase; CAT

**Background** Catalase (CAT) is a member of the catalase family. It exists as a homotetramer that occurs in almost all aerobically respiring organisms and serves to protect cells from the toxic effects of hydrogen peroxide. Catalase is localized in the peroxisome. Catalase promotes growth of cells including T-cells, B-cells, myeloid leukemia cells,

**Product Name: Recombinant Human CAT**  
**Catalog #: PEH0238**

---

melanoma cells, mastocytoma cells, and normal and transformed fibroblast cells. Defects in CAT are the cause of acatalasemia which is characterized by absence of catalase activity in red cells and is associated with ulcerating oral lesions.

**Note**

For Research Use Only , Not for Diagnostic Use.