

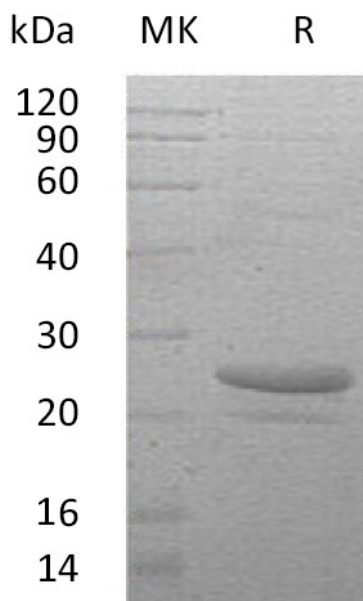
**Product Name: Recombinant Human CT-1 (N-6His)**  
**Catalog #: PEH0233**



## Summary

<b>Name</b>	Cardiotrophin-1/CTF1
<b>Purity</b>	Greater than 95% as determined by reducing SDS-PAGE
<b>Endotoxin level</b>	<1 EU/μg as determined by LAL test.
<b>Construction</b>	Recombinant Human Cardiotrophin-1 is produced by our E.coli expression system and the target gene encoding Met1-Ala201 is expressed with a 6His tag at the N-terminus.
<b>Accession #</b>	Q16619
<b>Host</b>	E.coli
<b>Species</b>	Human
<b>Predicted Molecular Mass</b>	22.6 KDa
<b>Formulation</b>	Supplied as a 0.2 μm filtered solution of PBS, 2mM EDTA, 5% Trehalose, pH 7.4.
<b>Shipping</b>	The product is shipped on dry ice/polar packs. Upon receipt, store it immediately at the temperature listed below.
<b>Stability&amp;Storage</b>	Store at ≤-70°C, stable for 6 months after receipt. Store at ≤-70°C, stable for 3 months under sterile conditions after opening. Please minimize freeze-thaw cycles.
<b>Reconstitution</b>	

## SDS-PAGE image



**Product Name: Recombinant Human CT-1 (N-6His)**  
**Catalog #: PEH0233**

---



### **Alternative Names**

Cardiotrophin-1; CT-1; CTF1;

### **Background**

Cardiotrophin-1, also known as CT-1 and CTF1, is a member of the IL-6 superfamily. It is a secreted cytokine that is expressed in heart, skeletal muscle, prostate and ovary, and to lower levels in lung, kidney, pancreas, thymus, testis and small intestine. The protein exerts its cellular effects by interacting with the glycoprotein 130 (gp130)/leukemia inhibitory factor receptor beta (LIFR) heterodimer. In addition, CT-1 activates phosphatidylinositol 3-kinase (PI-3 kinase) in cardiac myocytes and enhances transcription factor NF- $\kappa$ B DNA-binding activities.

### **Note**

For Research Use Only , Not for Diagnostic Use.