

**Product Name: Recombinant Human BDH1 (N-6His)**  
**Catalog #: PEH0144**

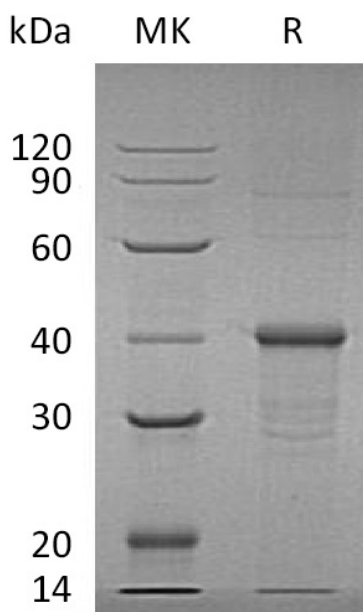


## Summary

<b>Name</b>	BDH1/D- $\beta$ -hydroxybutyrate dehydrogenase
<b>Purity</b>	Greater than 95% as determined by reducing SDS-PAGE
<b>Endotoxin level</b>	<1 EU/ $\mu$ g as determined by LAL test.
<b>Construction</b>	Recombinant Human D-beta-Hydroxybutyrate Dehydrogenase Mitochondrial/BDH1 is produced by our E.coli expression system and the target gene encoding Met1-Arg343 is expressed with a 6His tag at the N-terminus.
<b>Accession #</b>	Q02338
<b>Host</b>	E.coli
<b>Species</b>	Human
<b>Predicted Molecular Mass</b>	40.3 KDa
<b>Formulation</b>	Supplied as a 0.2 $\mu$ m filtered solution of 50mM Tris-HCl, 1mM DTT, pH 7.5.
<b>Shipping</b>	The product is shipped on dry ice/polar packs. Upon receipt, store it immediately at the temperature listed below.
<b>Stability&amp;Storage</b>	Store at $\leq -70^{\circ}\text{C}$ , stable for 6 months after receipt. Store at $\leq -70^{\circ}\text{C}$ , stable for 3 months under sterile conditions after opening. Please minimize freeze-thaw cycles.
<b>Reconstitution</b>	

## SDS-PAGE image

**Product Name: Recombinant Human BDH1 (N-6His)**  
**Catalog #: PEH0144**



### Alternative Names

D-Beta-Hydroxybutyrate Dehydrogenase Mitochondrial; BDH; 3-Hydroxybutyrate Dehydrogenase; BDH

### Background

D-Beta-Hydroxybutyrate Dehydrogenase Mitochondrial (BDH) is a member of the short-chain dehydrogenases/reductases (SDR) family. BDH is localized in the mitochondrion matrix. BDH forms a homotetrameric lipid-requiring enzyme of the mitochondrial membrane and has a specific necessity for phosphatidylcholine for optimal enzymatic activity. BDH catalyzes the interconversion of acetoacetate and (R)-3-hydroxybutyrate, the 2 main ketone bodies formed during fatty acid catabolism.

### Note

For Research Use Only , Not for Diagnostic Use.