

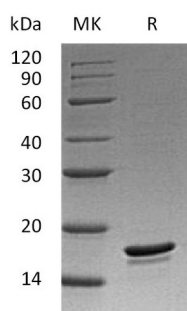
Product Name: Recombinant Human Bcl-2-w (C-6His)
Catalog #: PEH0138



Summary

Name	Bcl-w/Bcl-2-like protein 2
Purity	Greater than 95% as determined by reducing SDS-PAGE
Endotoxin level	<1 EU/μg as determined by LAL test.
Construction	Recombinant Human B Cell Lymphoma/Leukemia w is produced by our E.coli expression system and the target gene encoding Ala2-Thr172 is expressed with a 6His tag at the C-terminus.
Accession #	AAI13523.1
Host	E.coli
Species	Human
Predicted Molecular Mass	19.87 KDa
Formulation	Supplied as a 0.2 μm filtered solution of 25mM HEPES, 100mM KCl, 20% Glycerol, pH 7.5.
Shipping	The product is shipped on dry ice/polar packs. Upon receipt, store it immediately at the temperature listed below.
Stability&Storage	Store at ≤-70°C, stable for 6 months after receipt. Store at ≤-70°C, stable for 3 months under sterile conditions after opening. Please minimize freeze-thaw cycles.
Reconstitution	

SDS-PAGE image



Background

Alternative Names	Bcl-2-Like Protein 2; Bcl2-L-2; Apoptosis Regulator Bcl-W; BCL2L2; BCLW; KIAA0271
Background	Bcl-2-like protein 2 (BCL2L2) belongs to the Bcl-2 family. BCL2L2 is highly expressed in the brain, spinal cord, testis, pancreas, heart, spleen, and mammary

Product Name: Recombinant Human Bcl-2 (C-6His)
Catalog #: PEH0138



glands. BCL2L2 is a peripheral membrane protein containing three motifs, BH1, BH2 and BH4. The BH4 motif appears to be involved in the anti-apoptotic function. The BH1 and BH2 motifs form a hydrophobic groove which acts as a docking site for the BH3 domain of some pro-apoptotic proteins. BCL2L2 promotes cell survival and blocks dexamethasone-induced apoptosis. Furthermore, BCL2L2 mediates survival of postmitotic Sertoli cells by suppressing death-promoting activity of BAX.

Note

For Research Use Only , Not for Diagnostic Use.