

**Product Name: Recombinant Human ATG3**  
**Catalog #: PEH0110**

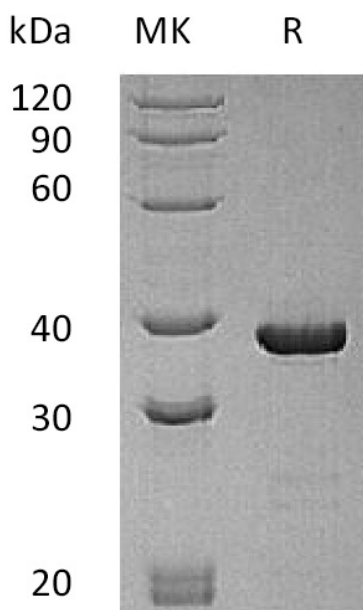
---

## Summary

<b>Name</b>	ATG3/Apg3L/Apg3p
<b>Purity</b>	Greater than 95% as determined by reducing SDS-PAGE
<b>Endotoxin level</b>	<1 EU/μg as determined by LAL test.
<b>Construction</b>	Recombinant Human Ubiquitin-like-conjugating Enzyme ATG3/ATG3 is produced by our E.coli expression system and the target gene encoding Met1-Met314 is expressed.
<b>Accession #</b>	Q9NT62
<b>Host</b>	E.coli
<b>Species</b>	Human
<b>Predicted Molecular Mass</b>	36 KDa
<b>Formulation</b>	Supplied as a 0.2 μm filtered solution of 20mM Tris-HCl, 150mM NaCl, 10% Glycerol, pH 8.0.
<b>Shipping</b>	The product is shipped on dry ice/polar packs. Upon receipt, store it immediately at the temperature listed below.
<b>Stability&amp;Storage</b>	Store at ≤-70°C, stable for 6 months after receipt. Store at ≤-70°C, stable for 3 months under sterile conditions after opening. Please minimize freeze-thaw cycles.
<b>Reconstitution</b>	

## SDS-PAGE image

**Product Name: Recombinant Human ATG3**  
**Catalog #: PEH0110**



### Alternative Names

Ubiquitin-like-conjugating enzyme ATG3; Autophagy-related protein 3; APG3-like; hApg3; Protein PC3-96; ATG3; APG3; APG3L

### Background

Ubiquitin-like-conjugating enzyme ATG3 (ATG3), also known as Apg3L and Apg3p, functions as a regulatory component of autophagosome biogenesis necessary for autophagy. ATG3 exhibits 98% aa sequence identity with both its mouse and rat orthologs. It is widely expressed and has highly levels in heart, skeletal muscle, kidney, liver and placenta. As an E2-like enzyme, involves in autophagy and mitochondrial homeostasis. ATG3 catalyzes the conjugation of ATG8-like proteins to PE which is essential for autophagy. ATG3 also can catalyze the conjugation of ATG12 to itself which plays a role in mitochondrial homeostasis but not in autophagy.

### Note

For Research Use Only , Not for Diagnostic Use.