

Product Name: Recombinant Human ANXA6 (C-6His)
Catalog #: PEH0074

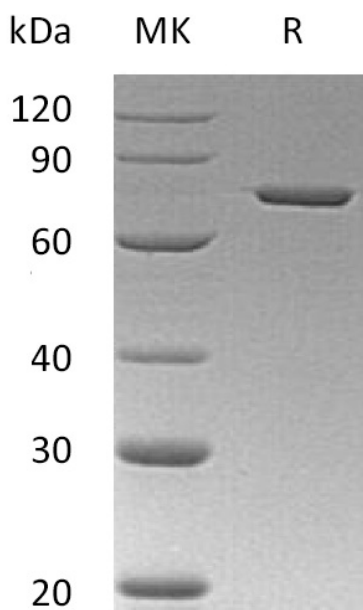


Summary

Name	Annexin A6/ANXA6
Purity	Greater than 95% as determined by reducing SDS-PAGE
Endotoxin level	<1 EU/μg as determined by LAL test.
Construction	Recombinant Human Annexin A6 is produced by our E.coli expression system and the target gene encoding Ala2-Asp673 is expressed with a 6His tag at the C-terminus.
Accession #	P08133
Host	E.coli
Species	Human
Predicted Molecular Mass	76.9 KDa
Formulation	Lyophilized from a 0.2 μm filtered solution of PBS, pH 7.4.
Shipping	The product is shipped at ambient temperature. Upon receipt, store it immediately at the temperature listed below.
Stability&Storage	Lyophilized protein should be stored at ≤ -20°C, stable for one year after receipt. Reconstituted protein solution can be stored at 2-8°C for 2-7 days. Aliquots of reconstituted samples are stable at ≤ -20°C for 3 months.
Reconstitution	Always centrifuge tubes before opening. Do not mix by vortex or pipetting. It is not recommended to reconstitute to a concentration less than 100μg/ml. Dissolve the lyophilized protein in distilled water. Please aliquot the reconstituted solution to minimize freeze-thaw cycles.

SDS-PAGE image

Product Name: Recombinant Human ANXA6 (C-6His)
Catalog #: PEH0074



Alternative Names

Annexin A6; 67 kDa Calelectrin; Annexin VI; Annexin-6; Calphobindin-II; CPB-II; Chromobindin-20; Lipocortin VI; Protein III; p68; p70; ANXA6; ANX6

Background

Annexin A6 (ANAX6) belongs to a family of calcium-dependent membrane and phospholipid binding proteins. Annexin A6 is a secreted protein and locates on the cell surface. Annexin A6 contains 8 annexin repeats separated by linking sequences of variable lengths. A pair of annexin repeats may form one binding site for calcium and phospholipid. ANXA6 is involved in the regulation of the release of Ca^{2+} from intracellular stores and may be associated with CD21. In addition, ANXA6 has been implicated in mediating the endosome aggregation and vesicle fusion in secreting epithelia during exocytosis.

Note

For Research Use Only , Not for Diagnostic Use.