

**Product Name: Recombinant Human SNCA (N-6His)**  
**Catalog #: PEH0052**

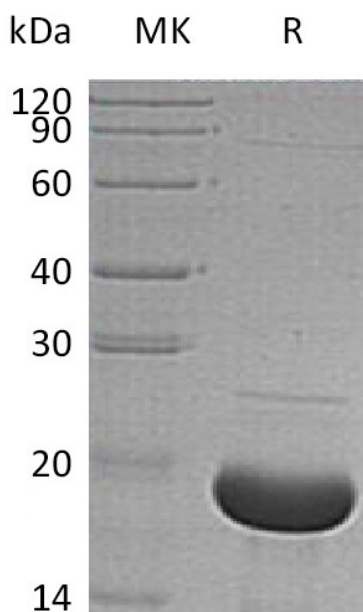


## Summary

<b>Name</b>	SNCA/Alpha-synuclein
<b>Purity</b>	Greater than 95% as determined by reducing SDS-PAGE
<b>Endotoxin level</b>	<1 EU/μg as determined by LAL test.
<b>Construction</b>	Recombinant Human Alpha-Synuclein is produced by our E.coli expression system and the target gene encoding Met1-Ala140 is expressed with a 6His tag at the N-terminus.
<b>Accession #</b>	P37840
<b>Host</b>	E.coli
<b>Species</b>	Human
<b>Predicted Molecular Mass</b>	16.7 KDa
<b>Formulation</b>	Lyophilized from a 0.2 μm filtered solution of 20mM PB, 150mM NaCl, pH 7.4.
<b>Shipping</b>	The product is shipped at ambient temperature. Upon receipt, store it immediately at the temperature listed below.
<b>Stability&amp;Storage</b>	Lyophilized protein should be stored at ≤ -20°C, stable for one year after receipt. Reconstituted protein solution can be stored at 2-8°C for 2-7 days. Aliquots of reconstituted samples are stable at ≤ -20°C for 3 months.
<b>Reconstitution</b>	Always centrifuge tubes before opening. Do not mix by vortex or pipetting. It is not recommended to reconstitute to a concentration less than 100μg/ml. Dissolve the lyophilized protein in distilled water. Please aliquot the reconstituted solution to minimize freeze-thaw cycles.

## SDS-PAGE image

**Product Name: Recombinant Human SNCA (N-6His)**  
**Catalog #: PEH0052**



### Alternative Names

Alpha-Synuclein; Non-A Beta Component of AD Amyloid; Non-A4 Component of Amyloid Precursor; NACP; SNCA; NACP; PARK1

### Background

Alpha-Synuclein (SNCA) is a member of the Synuclein family. SNCA is expressed principally in brain but also expressed in low concentrations in all tissues except liver. SNCA interacts with UCHL1, Phospholipase D and histones. SNCA can include beta- and gamma-synuclein. In addition, SNCA is an important regulatory component of vesicular transport in neuronal cells. It has been suggested that SNCA is related to the pathogenesis of Parkinsons Disease and neurodegenerative disorders. Defects in SNCA will lead to Dementia Lewy Body (DLB).

### Note

For Research Use Only , Not for Diagnostic Use.