

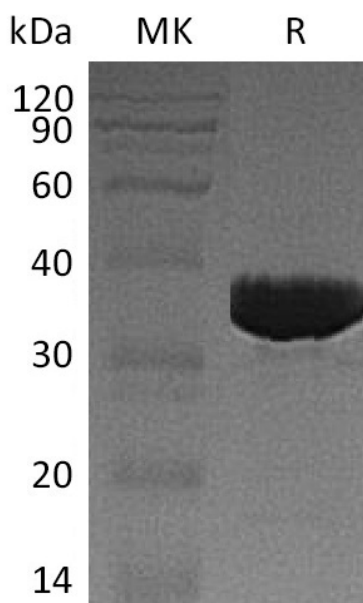
Product Name: Recombinant Human GALM (C-6His)
Catalog #: PEH0040



Summary

Name	Aldose 1-epimerase/GALM
Purity	Greater than 95% as determined by reducing SDS-PAGE
Endotoxin level	<1 EU/μg as determined by LAL test.
Construction	Recombinant Human Galactose Mutarotase is produced by our E.coli expression system and the target gene encoding Ala2-Ala342 is expressed with a 6His tag at the C-terminus.
Accession #	Q96C23
Host	E.coli
Species	Human
Predicted Molecular Mass	38.8 KDa
Formulation	Supplied as a 0.2 μm filtered solution of PBS, pH 7.4.
Shipping	The product is shipped on dry ice/polar packs. Upon receipt, store it immediately at the temperature listed below.
Stability&Storage	Store at ≤-70°C, stable for 6 months after receipt. Store at ≤-70°C, stable for 3 months under sterile conditions after opening. Please minimize freeze-thaw cycles.
Reconstitution	

SDS-PAGE image



Product Name: Recombinant Human GALM (C-6His)
Catalog #: PEH0040



Alternative Names

Aldose 1-Epimerase; Galactose Mutarotase; GALM

Background

Galactose Mutarotase (GALM) is a cytoplasmic enzyme that belongs to the Aldose Epimerase family. GALM is a Mutarotase that converts α -Aldose to the β -Anomer. GALM is active on D-Glucose, L-Arabinose, D-Xylose, D-Galactose, Maltose and Lactose. GALM may be required for normal Galactose metabolism by maintaining the equilibrium of α - and β - anomers of Galactose.

Note

For Research Use Only , Not for Diagnostic Use.