

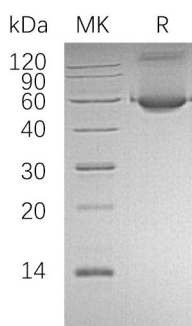
Product Name: Recombinant Human ALDH1A1 (N-6His)
Catalog #: PEH0033



Summary

Name	ALDH1A1/Aldehyde Dehydrogenase 1-A1
Purity	Greater than 95% as determined by reducing SDS-PAGE
Endotoxin level	<1 EU/μg as determined by LAL test.
Construction	Recombinant Human Aldehyde Dehydrogenase Family 1 Member A1 is produced by our E.coli expression system and the target gene encoding Met1-Ser501 is expressed with a 6His tag at the N-terminus.
Accession #	P00352
Host	E.coli
Species	Human
Predicted Molecular Mass	57 KDa
Formulation	Supplied as a 0.2 μm filtered solution of 20mM Tris-HCl, 150mM NaCl, 20% Glycerol, 1mM DTT, pH 8.0.
Shipping	The product is shipped on dry ice/polar packs. Upon receipt, store it immediately at the temperature listed below.
Stability&Storage	Store at ≤-70°C, stable for 6 months after receipt. Store at ≤-70°C, stable for 3 months under sterile conditions after opening. Please minimize freeze-thaw cycles.
Reconstitution	

SDS-PAGE image



Background

Alternative Names	Retinal Dehydrogenase 1; RALDH 1; RaLDH1; ALDH-E1; ALHDII; Aldehyde Dehydrogenase Family 1 Member A1; Aldehyde Dehydrogenase Cytosolic; ALDH1A1; ALDC; ALDH1; PUMB1
Background	Aldehyde Dehydrogenase Family 1 Member A1 (ALDH1A1) is a cytoplasmic

Product Name: Recombinant Human ALDH1A1 (N-6His)
Catalog #: PEH0033



enzyme that belongs to the Aldehyde Dehydrogenase family. ALDH1A1 is the second enzyme of the major oxidative pathway of alcohol metabolism. Two major liver isoforms of this enzyme, cytosolic and mitochondrial, can be distinguished by their electrophoretic mobilities, kinetic properties and subcellular localizations. ALDH1A1 is the main cytosolic isoform, which has a lower affinity for aldehydes than the mitochondrial enzyme. ALDH1A1 binds free retinal and cellular retinol-binding protein-bound retinal. It can convert/oxidize retinaldehyde to retinoic acid.

Note

For Research Use Only , Not for Diagnostic Use.