

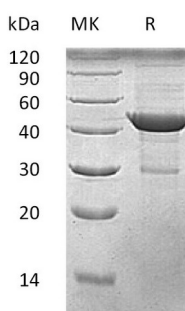
**Product Name: Recombinant Human Beta-Actin (C-6His)**  
**Catalog #: PEH0010**



## Summary

<b>Name</b>	Actin, cytoplasmic 1/ACTB
<b>Purity</b>	Greater than 95% as determined by reducing SDS-PAGE
<b>Endotoxin level</b>	<1 EU/μg as determined by LAL test.
<b>Construction</b>	Recombinant Human Beta-Actin is produced by our E.coli expression system and the target gene encoding Asp2-Phe375 is expressed with a 6His tag at the C-terminus.
<b>Accession #</b>	P60709
<b>Host</b>	E.coli
<b>Species</b>	Human
<b>Predicted Molecular Mass</b>	42.8 KDa
<b>Formulation</b>	Supplied as a 0.2 μm filtered solution of 10mM Tris-HCl, 0.1% TritonX-100, 2mM DTT, 10% Glycerol, pH 8.0.
<b>Shipping</b>	The product is shipped on dry ice/polar packs. Upon receipt, store it immediately at the temperature listed below.
<b>Stability&amp;Storage</b>	Store at ≤-70°C, stable for 6 months after receipt. Store at ≤-70°C, stable for 3 months under sterile conditions after opening. Please minimize freeze-thaw cycles.
<b>Reconstitution</b>	

## SDS-PAGE image



## Background

<b>Alternative Names</b>	Actin Cytoplasmic 1; Beta-Actin; ACTB
<b>Background</b>	Actins are ubiquitous globular and highly conserved proteins that are involved in various types of cell motility, structure, and integrity. Three main groups of actin

**Product Name: Recombinant Human Beta-Actin (C-6His)**  
**Catalog #: PEH0010**

---



isoforms, alpha, beta and gamma have been identified. The alpha actins are found in muscle tissues and are a major constituent of the contractile apparatus. The beta and gamma actins co-exist in most cell types as components of the cytoskeleton, and as mediators of internal cell motility. ACTB is a major constituent of the contractile apparatus and one of the two nonmuscle cytoskeletal actins. Polymerization of globular actin (G-actin) leads to a structural filament (F-actin) in the form of a two-stranded helix. Each actin can bind to 4 others.

### **Note**

For Research Use Only , Not for Diagnostic Use.