

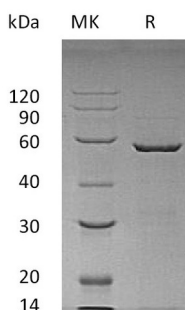
Product Name: Recombinant Human YWHAE (N-GST)
Catalog #: PEH0001



Summary

Name	14-3-3 protein epsilon/YWHAE
Purity	Greater than 95% as determined by reducing SDS-PAGE
Endotoxin level	<1 EU/μg as determined by LAL test.
Construction	Recombinant Human 14-3-3 Protein Epsilon is produced by our E.coli expression system and the target gene encoding Met1-Gln255 is expressed with a GST tag at the N-terminus.
Accession #	P62258
Host	E.coli
Species	Human
Predicted Molecular Mass	55.98 KDa
Formulation	Lyophilized from a 0.2 μm filtered solution of 20mM PB, 150mM NaCl, pH 6.0.
Shipping	The product is shipped at ambient temperature. Upon receipt, store it immediately at the temperature listed below.
Stability&Storage	Lyophilized protein should be stored at ≤ -20°C, stable for one year after receipt. Reconstituted protein solution can be stored at 2-8°C for 2-7 days. Aliquots of reconstituted samples are stable at ≤ -20°C for 3 months.
Reconstitution	Always centrifuge tubes before opening. Do not mix by vortex or pipetting. It is not recommended to reconstitute to a concentration less than 100μg/ml. Dissolve the lyophilized protein in distilled water. Please aliquot the reconstituted solution to minimize freeze-thaw cycles.

SDS-PAGE image



Background

Product Name: Recombinant Human YWHAE (N-GST)
Catalog #: PEH0001



Alternative Names

14-3-3 Protein Epsilon; 14-3-3E; YWHAE

Background

14-3-3 Protein Epsilon acts as an adapter protein implicated in the regulation of a large spectrum of both general and specialized signaling pathways. 14-3-3 protein epsilon binds to a large number of partners, usually by recognition of a phosphoserine or phosphothreonine motif. Binding generally results in the modulation of the activity of the binding partner.

Note

For Research Use Only , Not for Diagnostic Use.