

---

**Product Name: MSH2 Mouse Monoclonal Antibody****Catalog #: AMM22189**

For research use only.

**Summary**

<b>Description</b>	Mouse Monoclonal Antibody
<b>Host</b>	Mouse
<b>Application</b>	IHC,WB
<b>Reactivity</b>	Human
<b>Conjugation</b>	Unconjugated
<b>Modification</b>	Unmodified
<b>Isotype</b>	IgG1,kappa
<b>Clonality</b>	Monoclonal
<b>Form</b>	Liquid
<b>Storage</b>	Aliquot and store at -20°C (valid for 12 months). Avoid freeze/thaw cycles.
<b>Shipping</b>	Ice bags
<b>Buffer</b>	PBS, 50% glycerol, 0.05% Proclin 300, 0.05%BSA
<b>Purification</b>	Protein G

**Application**

<b>Dilution Ratio</b>	IHC 1:100-1:400;WB 1:2000-1:10000;
<b>Molecular Weight</b>	Calculated MW:105kDa,Observed MW:105kDa

**Antigen Information**

<b>Gene Name</b>	MSH2
<b>Alternative Names</b>	MSH2;DNA mismatch repair protein Msh2;hMSH2;MutS protein homolog 2
<b>Gene ID</b>	Human:4436,Mouse:17685,Rat:17685
<b>SwissProt ID</b>	Human:P43246,Mouse:P43247,Rat:P54275
<b>Immunogen</b>	

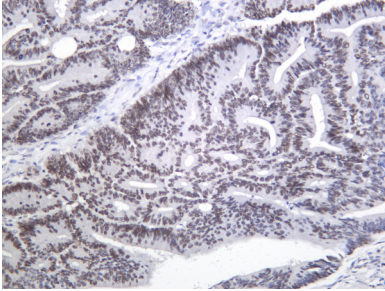
**Background**

This locus is frequently mutated in hereditary nonpolyposis colon cancer (HNPCC). When cloned, it was discovered to be a human homolog of the E. coli mismatch repair gene mutS, consistent with the characteristic alterations in microsatellite sequences (RER+ phenotype) found in HNPCC. Two transcript variants encoding different isoforms have been found for this gene. [provided by RefSeq, Apr 2012],

## Research Area

Pathology

## Image Data



Human colon carcinoma tissue was stained with Anti-MSH2 Antibody