

---

**Product Name: GH/hPL Mouse Monoclonal Antibody****Catalog #: AMM22176**

For research use only.

**Summary**

<b>Description</b>	Mouse Monoclonal Antibody
<b>Host</b>	Mouse
<b>Application</b>	IHC,IF,ELISA
<b>Reactivity</b>	Human
<b>Conjugation</b>	Unconjugated
<b>Modification</b>	Unmodified
<b>Isotype</b>	IgG1,Kappa
<b>Clonality</b>	Monoclonal
<b>Form</b>	Liquid
<b>Storage</b>	Aliquot and store at -20°C (valid for 12 months). Avoid freeze/thaw cycles.
<b>Shipping</b>	Ice bags
<b>Buffer</b>	PBS, 50% glycerol, 0.05% Proclin 300, 0.05%BSA
<b>Purification</b>	The antibody was affinity-purified from ascites by affinity-chromatography using specific immunogen.

**Application**

**Dilution Ratio** IHC 1:200-400;IF 1:50-200;ELISA 1:500-5000

**Molecular Weight**

**Antigen Information**

**Gene Name** CSH1/CSH2/GH1

**Alternative Names**

**Gene ID**

**SwissProt ID** Human:P01241;P0DML2;P0DML3

**Immunogen** Synthesized peptide derived from human Anti-HumanPlacental lactogen AA range: 150-217

**Background**

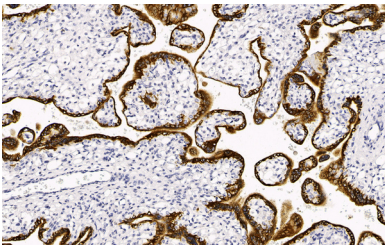
The protein encoded by this gene is a member of the somatotropin/prolactin family of hormones which play an important role in growth control. The gene, along with four other related genes, is located at the growth hormone locus on chromosome 17 where they are interspersed in the same transcriptional orientation; an arrangement which is thought to have evolved by a

series of gene duplications. The five genes share a remarkably high degree of sequence identity. Alternative splicing generates additional isoforms of each of the five growth hormones, leading to further diversity and potential for specialization. This particular family member is expressed in the pituitary but not in placental tissue as is the case for the other four genes in the growth hormone locus. Mutations in or deletions of the gene lead to growth hormone deficiency and short stature. [provided by RefSeq, Jul 2008],

## Research Area

Pathology

## Image Data



Human placenta tissue was stained with Anti-GH + hPL Antibody