

---

**Product Name: p57kip2 Mouse Monoclonal Antibody****Catalog #: AMM22175**

For research use only.

**Summary**

<b>Description</b>	Mouse Monoclonal Antibody
<b>Host</b>	Mouse
<b>Application</b>	IHC,ELISA
<b>Reactivity</b>	Human,Mouse,Rat
<b>Conjugation</b>	Unconjugated
<b>Modification</b>	Unmodified
<b>Isotype</b>	IgG2b,Kappa
<b>Clonality</b>	Monoclonal
<b>Form</b>	Liquid
<b>Storage</b>	Aliquot and store at -20°C (valid for 12 months). Avoid freeze/thaw cycles.
<b>Shipping</b>	Ice bags
<b>Buffer</b>	PBS, 50% glycerol, 0.05% Proclin 300, 0.05%BSA
<b>Purification</b>	The antibody was affinity-purified from ascites by affinity-chromatography using specific immunogen.

**Application**

<b>Dilution Ratio</b>	IHC 1:200-400;ELISA 1:500-5000
<b>Molecular Weight</b>	Calculated MW:50kDa,Observed MW:57kDa

**Antigen Information**

<b>Gene Name</b>	CDKN1C KIP2
<b>Alternative Names</b>	Beckwith Wiedemann syndrome;BWCR;BWS;CDKI;CDKN1C;CDKN1C;CDN1C_HUMAN;Cyclin dependent kinase inhibitor 1C;Cyclin dependent kinase inhibitor p57;Cyclin-dependent kinase inhibitor 1C;Cyclin-dependent kinase inhibitor p57;KIP 2;KIP2;p57;p57 Kip 2;p57KIP2;WBS
<b>Gene ID</b>	Human:1028
<b>SwissProt ID</b>	Human:P49918,Mouse:P49919
<b>Immunogen</b>	Synthesized peptide derived from human p57kip2 AA range: 200-316

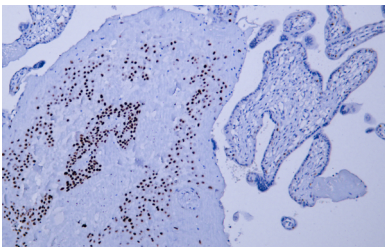
**Background**

This gene is imprinted, with preferential expression of the maternal allele. The encoded protein is a tight-binding, strong inhibitor of several G1 cyclin/Cdk complexes and a negative regulator of cell proliferation. Mutations in this gene are implicated in sporadic cancers and Beckwith-Wiedemann syndrome, suggesting that this gene is a tumor suppressor candidate. Three transcript variants encoding two different isoforms have been found for this gene. [provided by RefSeq, Oct 2010],

## Research Area

Pathology

## Image Data



Human placenta tissue was stained with Anti-p57kip2 Antibody