
Product Name: PMEL/Melanoma gp100(HMB45) Mouse Monoclonal Antibody**Catalog #: AMM22168**

For research use only.

Summary

Description	Mouse Monoclonal Antibody
Host	Mouse
Application	IHC,ELISA
Reactivity	Human,Mouse
Conjugation	Unconjugated
Modification	Unmodified
Isotype	IgG1,Kappa
Clonality	Monoclonal
Form	Liquid
Storage	Aliquot and store at -20°C (valid for 12 months). Avoid freeze/thaw cycles.
Shipping	Ice bags
Buffer	PBS, 50% glycerol, 0.05% Proclin 300, 0.05%BSA
Purification	The antibody was affinity-purified from ascites by affinity-chromatography using specific immunogen.

Application

Dilution Ratio	IHC 1:200-400;ELISA 1:500-5000
Molecular Weight	Calculated MW:70kDa,Observed MW:80kDa

Antigen Information

Gene Name	PMEL D12S53E PMEL17 SILV
Alternative Names	95 kDa melanocyte specific secreted glycoprotein;95 kDa melanocyte-specific secreted glycoprotein;D12S53E;gp100;M-beta;ME20;ME20 M/ME20 S;ME20-M;ME20-S;ME20M;ME20M/ME20S;ME20S;Melanocyte lineage specific antigen GP100;Melanocyte protein mel 17;Melanocyte protein Pmel 17;Melanocyte protein Pmel 17 precursor;Melanocytes lineage-specific antigen GP100;Melanoma associated ME20 antigen;Melanoma gp100;Melanoma-associated ME20 antigen;Melanosomal matrix protein17;P1;p100;p26;PMEL 17;PMEL;PMEL_HUMAN;PMEL17;Premelanosome protein;Secreted melanoma-associated ME20 antigen;SI;SIL;SILV;Silver;mouse homolog;like;Silver homolog;Silver locus protein

	homolog;HMB45;
Gene ID	
SwissProt ID	Human:P40967,Mouse:Q60696
Immunogen	Synthesized peptide derived from human PMEL AA range: 400-500

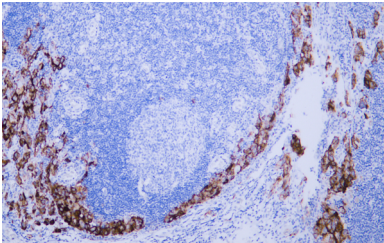
Background

This gene encodes a melanocyte-specific type I transmembrane glycoprotein. The encoded protein is enriched in melanosomes, which are the melanin-producing organelles in melanocytes, and plays an essential role in the structural organization of premelanosomes. This protein is involved in generating internal matrix fibers that define the transition from Stage I to Stage II melanosomes. This protein undergoes a complex pattern of posttranslational processing and modification that is essential to the proper functioning of the protein. A secreted form of this protein that is released by proteolytic ectodomain shedding may be used as a melanoma-specific serum marker. Alternate splicing results in multiple transcript variants. [provided by RefSeq, Jan 2011],

Research Area

Pathology

Image Data



Human malignant mesothelioma tissue was stained with Anti-PMEL Antibody