
Product Name: S100P Mouse Monoclonal Antibody**Catalog #: AMM22167**

For research use only.

Summary

Description	Mouse Monoclonal Antibody
Host	Mouse
Application	IHC,IF,ELISA
Reactivity	Human
Conjugation	Unconjugated
Modification	Unmodified
Isotype	IgG1,Kappa
Clonality	Monoclonal
Form	Liquid
Storage	Aliquot and store at -20°C (valid for 12 months). Avoid freeze/thaw cycles.
Shipping	Ice bags
Buffer	PBS, 50% glycerol, 0.05% Proclin 300, 0.05%BSA
Purification	The antibody was affinity-purified from ascites by affinity-chromatography using specific immunogen.

Application

Dilution Ratio	IHC 1:200-400;IF 1:50-200;ELISA 1:500-5000
Molecular Weight	Calculated MW:10kDa

Antigen Information

Gene Name	S100P S100E
Alternative Names	MIG9;Migration inducing gene 9;Protein S100-E;Protein S100-P;Protein S100P;S100 calcium binding protein P;S100 calcium-binding protein P;S100 P;S100E;S100P;S100P_HUMAN
Gene ID	Human:6286
SwissProt ID	Human:P25815
Immunogen	Synthesized peptide derived from human S100P AA range: 1-95

Background

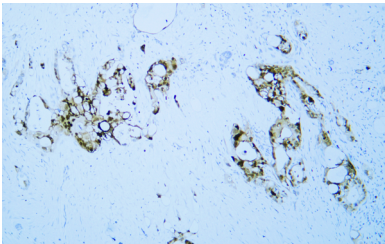
The protein encoded by this gene is a member of the S100 family of proteins containing 2 EF-hand calcium-binding motifs. S100 proteins are localized in the cytoplasm and/or nucleus of a wide range of cells, and involved in the regulation of a number

of cellular processes such as cell cycle progression and differentiation. S100 genes include at least 13 members which are located as a cluster on chromosome 1q21; however, this gene is located at 4p16. This protein, in addition to binding Ca^{2+} , also binds Zn^{2+} and Mg^{2+} . This protein may play a role in the etiology of prostate cancer. [provided by RefSeq, Jul 2008],

Research Area

Pathology

Image Data



Human pancreatic cancer tissue was stained with Anti-S100P Antibody