

---

**Product Name: TCL1 Mouse Monoclonal Antibody****Catalog #: AMM22159**

For research use only.

**Summary**

<b>Description</b>	Mouse Monoclonal Antibody
<b>Host</b>	Mouse
<b>Application</b>	IHC,ELISA
<b>Reactivity</b>	Human
<b>Conjugation</b>	Unconjugated
<b>Modification</b>	Unmodified
<b>Isotype</b>	IgG2b,Kappa
<b>Clonality</b>	Monoclonal
<b>Form</b>	Liquid
<b>Storage</b>	Aliquot and store at -20°C (valid for 12 months). Avoid freeze/thaw cycles.
<b>Shipping</b>	Ice bags
<b>Buffer</b>	PBS, 50% glycerol, 0.05% Proclin 300, 0.05%BSA
<b>Purification</b>	The antibody was affinity-purified from ascites by affinity-chromatography using specific immunogen.

**Application**

<b>Dilution Ratio</b>	IHC 1:200-400;ELISA 1:500-5000
<b>Molecular Weight</b>	Calculated MW:13kDa,Observed MW:13kDa

**Antigen Information**

<b>Gene Name</b>	TCL1A TCL1
<b>Alternative Names</b>	T-cell leukemia/lymphoma protein 1A;Oncogene TCL-1;Oncogene TCL1;Protein p14 TCL1;
<b>Gene ID</b>	Human:8115
<b>SwissProt ID</b>	Human:P56279
<b>Immunogen</b>	Synthesized peptide derived from human TCL1 AA range: 50-114

**Background**

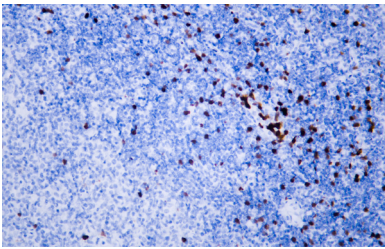
Overexpression of the TCL1 gene in humans has been implicated in the development of mature T cell leukemia, in which chromosomal rearrangements bring the TCL1 gene in close proximity to the T-cell antigen receptor (TCR)-alpha (MIM 186880) or TCR-beta (MIM 186930) regulatory elements (summarized by Virgilio et al., 1998 [PubMed 9520462]). In normal T cells TCL1

is expressed in CD4-/CD8- cells, but not in cells at later stages of differentiation. TCL1 functions as a coactivator of the cell survival kinase AKT (MIM 164730) (Laine et al., 2000 [PubMed 10983986]).[supplied by OMIM, Jul 2010],

## Research Area

Pathology

## Image Data



Human diffuse large B-cell lymphoma tissue was stained with Anti-TCL1 Antibody