
Product Name: Nucleophosmin(NPM) Mouse Monoclonal Antibody**Catalog #: AMM22158**

For research use only.

Summary

Description	Mouse Monoclonal Antibody
Host	Mouse
Application	IHC,ELISA
Reactivity	Human,Mouse,Rat
Conjugation	Unconjugated
Modification	Unmodified
Isotype	IgG2a,Kappa
Clonality	Monoclonal
Form	Liquid
Storage	Aliquot and store at -20°C (valid for 12 months). Avoid freeze/thaw cycles.
Shipping	Ice bags
Buffer	PBS, 50% glycerol, 0.05% Proclin 300, 0.05%BSA
Purification	The antibody was affinity-purified from ascites by affinity-chromatography using specific immunogen.

Application

Dilution Ratio	IHC 1:200-400;ELISA 1:500-5000
Molecular Weight	Calculated MW:32kDa,Observed MW:33kDa

Antigen Information

Gene Name	NPM1 NPM
Alternative Names	Nucleophosmin;NPM;Nucleolar phosphoprotein B23;Nucleolar protein NO38;Numatrin;
Gene ID	Human:4869
SwissProt ID	Human:P06748
Immunogen	Synthesized peptide derived from human Nucleophosmin AA range: 100-200

Background

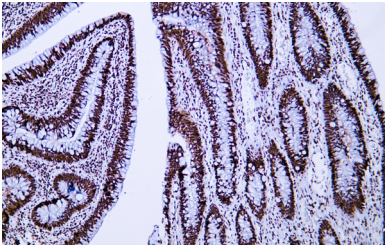
This gene encodes a phosphoprotein which moves between the nucleus and the cytoplasm. The gene product is thought to be involved in several processes including regulation of the ARF/p53 pathway. A number of genes are fusion partners have been characterized, in particular the anaplastic lymphoma kinase gene on chromosome 2. Mutations in this gene are associated with

acute myeloid leukemia. More than a dozen pseudogenes of this gene have been identified. Alternative splicing results in multiple transcript variants.[provided by RefSeq, Nov 2009],

Research Area

Pathology

Image Data



Human colon carcinoma tissue was stained with Anti-Nucleophosmin Antibody