
Product Name: CD8a Mouse Monoclonal Antibody**Catalog #: AMM22154**

For research use only.

Summary

Description	Mouse Monoclonal Antibody
Host	Mouse
Application	IHC,ELISA
Reactivity	Human
Conjugation	Unconjugated
Modification	Unmodified
Isotype	IgG2b,Kappa
Clonality	Monoclonal
Form	Liquid
Storage	Aliquot and store at -20°C (valid for 12 months). Avoid freeze/thaw cycles.
Shipping	Ice bags
Buffer	PBS, 50% glycerol, 0.05% Proclin 300, 0.05%BSA
Purification	The antibody was affinity-purified from ascites by affinity-chromatography using specific immunogen.

Application

Dilution Ratio	IHC 1:200-400;ELISA 1:500-5000
Molecular Weight	Calculated MW:26kDa,Observed MW:30-35kDa

Antigen Information

Gene Name	CD8A MAL
Alternative Names	alpha polypeptide;p32;CD_antigen=CD8a;CD8;CD8 antigen alpha polypeptide;CD8 antigen alpha polypeptide;p32;CD8 antigen, alpha polypeptide;p32;CD8a;CD8A antigen;CD8A molecule;CD8A_HUMAN;Leu2;Leu2 T lymphocyte antigen;Ly 2;Ly 35;Ly B;Ly2;Ly3;Ly35;LyB;Lyt 2.1 lymphocyte differentiation antigen;AA at 100;LYT3;MAL;OKT8 T cell antigen;OTTHUMP00000160760;OTTHUMP00000160764;OTTHUMP00000203528;OTTHUMP00000203721;p32;T cell antigen Leu2;T cell co receptor;T lymphocyte differentiation antigen T8/Leu 2;T-cell surface glycoprotein CD8 alpha chain;T-cell surface glycoprotein Lyt 2;T-lymphocyte differentiation antigen T8/Leu-2;T8 T cell antigen;T8/Leu-2 T-lymphocyte

	differentiation antigen
Gene ID	Human:925
SwissProt ID	Human:P01732,Mouse:P01731,Rat:P07725
Immunogen	Synthesized peptide derived from human CD8 AA range: 100-235

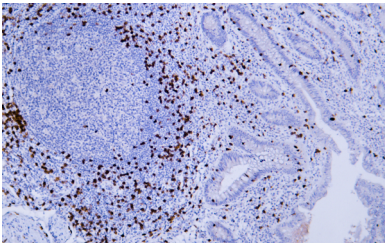
Background

The CD8 antigen is a cell surface glycoprotein found on most cytotoxic T lymphocytes that mediates efficient cell-cell interactions within the immune system. The CD8 antigen acts as a coreceptor with the T-cell receptor on the T lymphocyte to recognize antigens displayed by an antigen presenting cell in the context of class I MHC molecules. The coreceptor functions as either a homodimer composed of two alpha chains or as a heterodimer composed of one alpha and one beta chain. Both alpha and beta chains share significant homology to immunoglobulin variable light chains. This gene encodes the CD8 alpha chain. Multiple transcript variants encoding different isoforms have been found for this gene. [provided by RefSeq, Nov 2011],

Research Area

Pathology

Image Data



Human appendix tissue was stained with Anti-CD8 Antibody