

---

**Product Name: PSA Mouse Monoclonal Antibody****Catalog #: AMM22143**

For research use only.

**Summary**

<b>Description</b>	Mouse Monoclonal Antibody
<b>Host</b>	Mouse
<b>Application</b>	IHC,ELISA
<b>Reactivity</b>	Human
<b>Conjugation</b>	Unconjugated
<b>Modification</b>	Unmodified
<b>Isotype</b>	IgG2b,Kappa
<b>Clonality</b>	Monoclonal
<b>Form</b>	Liquid
<b>Storage</b>	Aliquot and store at -20°C (valid for 12 months). Avoid freeze/thaw cycles.
<b>Shipping</b>	Ice bags
<b>Buffer</b>	PBS, 50% glycerol, 0.05% Proclin 300, 0.05%BSA
<b>Purification</b>	The antibody was affinity-purified from ascites by affinity-chromatography using specific immunogen.

**Application**

<b>Dilution Ratio</b>	IHC 1:200-400;ELISA 1:500-5000
<b>Molecular Weight</b>	Calculated MW:28kDa,Observed MW:28kDa

**Antigen Information**

<b>Gene Name</b>	KLK3 APS
<b>Alternative Names</b>	Prostate-specific antigen;PSA;Gamma-seminoprotein;Seminin;Kallikrein-3;P-30 antigen;Semenogelase;
<b>Gene ID</b>	Human:354
<b>SwissProt ID</b>	Human:P07288
<b>Immunogen</b>	Synthesized peptide derived from human PSA AA range: 100-200

**Background**

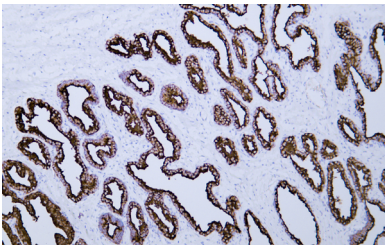
Kallikreins are a subgroup of serine proteases having diverse physiological functions. Growing evidence suggests that many kallikreins are implicated in carcinogenesis and some have potential as novel cancer and other disease biomarkers. This gene is

one of the fifteen kallikrein subfamily members located in a cluster on chromosome 19. Its protein product is a protease present in seminal plasma. It is thought to function normally in the liquefaction of seminal coagulum, presumably by hydrolysis of the high molecular mass seminal vesicle protein. Serum level of this protein, called PSA in the clinical setting, is useful in the diagnosis and monitoring of prostatic carcinoma. Alternate splicing of this gene generates several transcript variants encoding different isoforms. [provided by RefSeq, Jul 2008],

## Research Area

Pathology

## Image Data



Human prostate tissue was stained with Anti-Prostate-Specific Antigen Antibody