
Product Name: Nucleophosmin(NPM) Mouse Monoclonal Antibody**Catalog #: AMM22140**

For research use only.

Summary

| | |
|---------------------|--|
| Description | Mouse Monoclonal Antibody |
| Host | Mouse |
| Application | IHC,ELISA |
| Reactivity | Human |
| Conjugation | Unconjugated |
| Modification | Unmodified |
| Isotype | IgG2b,Kappa |
| Clonality | Monoclonal |
| Form | Liquid |
| Storage | Aliquot and store at -20°C (valid for 12 months). Avoid freeze/thaw cycles. |
| Shipping | Ice bags |
| Buffer | PBS, 50% glycerol, 0.05% Proclin 300, 0.05%BSA |
| Purification | The antibody was affinity-purified from ascites by affinity-chromatography using specific immunogen. |

Application

| | |
|-------------------------|---------------------------------------|
| Dilution Ratio | IHC 1:200-400;ELISA 1:500-5000 |
| Molecular Weight | Calculated MW:32kDa,Observed MW:33kDa |

Antigen Information

| | |
|--------------------------|---|
| Gene Name | NPM1 NPM |
| Alternative Names | Nucleophosmin;NPM;Nucleolar phosphoprotein B23;Nucleolar protein NO38;Numatrin; |
| Gene ID | Human:4869 |
| SwissProt ID | Human:P06748 |
| Immunogen | Synthesized peptide derived from human Nucleophosmin AA range: 100-200 |

Background

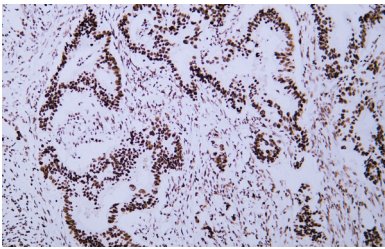
This gene encodes a phosphoprotein which moves between the nucleus and the cytoplasm. The gene product is thought to be involved in several processes including regulation of the ARF/p53 pathway. A number of genes are fusion partners have been characterized, in particular the anaplastic lymphoma kinase gene on chromosome 2. Mutations in this gene are associated with

acute myeloid leukemia. More than a dozen pseudogenes of this gene have been identified. Alternative splicing results in multiple transcript variants.[provided by RefSeq, Nov 2009],

Research Area

Pathology

Image Data



Human colon carcinoma tissue was stained with Anti-Nucleophosmin Antibody