
Product Name: Neurofilament(NF-L) Mouse Monoclonal Antibody**Catalog #: AMM22137**

For research use only.

Summary

| | |
|---------------------|--|
| Description | Mouse Monoclonal Antibody |
| Host | Mouse |
| Application | IHC,ELISA |
| Reactivity | Human |
| Conjugation | Unconjugated |
| Modification | Unmodified |
| Isotype | IgG2b,Kappa |
| Clonality | Monoclonal |
| Form | Liquid |
| Storage | Aliquot and store at -20°C (valid for 12 months). Avoid freeze/thaw cycles. |
| Shipping | Ice bags |
| Buffer | PBS, 50% glycerol, 0.05% Proclin 300, 0.05%BSA |
| Purification | The antibody was affinity-purified from ascites by affinity-chromatography using specific immunogen. |

Application

| | |
|-------------------------|---------------------------------------|
| Dilution Ratio | IHC 1:200-400;ELISA 1:500-5000 |
| Molecular Weight | Calculated MW:68kDa,Observed MW:68kDa |

Antigen Information

| | |
|--------------------------|--|
| Gene Name | NEFL NF68 NFL |
| Alternative Names | Neurofilament light polypeptide;NF-L;68 kDa neurofilament protein;Neurofilament triplet L protein; |
| Gene ID | Human:4747 |
| SwissProt ID | Human:P07196 |
| Immunogen | Synthesized peptide derived from human Neurofilament AA range: 400-543 |

Background

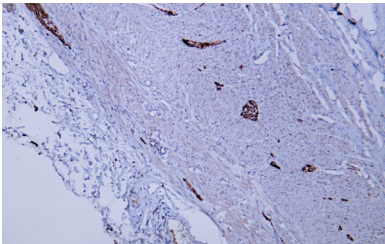
Neurofilaments are type IV intermediate filament heteropolymers composed of light, medium, and heavy chains. Neurofilaments comprise the axoskeleton and they functionally maintain the neuronal caliber. They may also play a role in

intracellular transport to axons and dendrites. This gene encodes the light chain neurofilament protein. Mutations in this gene cause Charcot-Marie-Tooth disease types 1F (CMT1F) and 2E (CMT2E), disorders of the peripheral nervous system that are characterized by distinct neuropathies. A pseudogene has been identified on chromosome Y. [provided by RefSeq, Oct 2008],

Research Area

Pathology

Image Data



Human appendix tissue was stained with Anti-Neurofilament Antibody