
Product Name: Myosin Heavy Chain, Smooth Muscle(SMMHC) Mouse Monoclonal Antibody**Catalog #: AMM22136**

For research use only.

Summary

Description	Mouse Monoclonal Antibody
Host	Mouse
Application	IHC,IF,ELISA
Reactivity	Human,Mouse,Rat
Conjugation	Unconjugated
Modification	Unmodified
Isotype	IgG1,Kappa
Clonality	Monoclonal
Form	Liquid
Storage	Aliquot and store at -20°C (valid for 12 months). Avoid freeze/thaw cycles.
Shipping	Ice bags
Buffer	PBS, 50% glycerol, 0.05% Proclin 300, 0.05%BSA
Purification	The antibody was affinity-purified from ascites by affinity-chromatography using specific immunogen.

Application

Dilution Ratio	IHC 1:200-400;IF 1:50-200;ELISA 1:500-5000
Molecular Weight	Calculated MW:227kDa,Observed MW:227kDa

Antigen Information

Gene Name	MYH11 KIAA0866
Alternative Names	Myosin-11;Myosin heavy chain 11;Myosin heavy chain, smooth muscle isoform;SMMHC;
Gene ID	Human:4629
SwissProt ID	Human:P35749
Immunogen	Synthesized peptide derived from human Myosin Heavy Chain, Smooth Muscle AA range: 300-400

Background

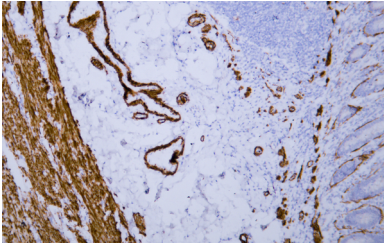
The protein encoded by this gene is a smooth muscle myosin belonging to the myosin heavy chain family. The gene product is

a subunit of a hexameric protein that consists of two heavy chain subunits and two pairs of non-identical light chain subunits. It functions as a major contractile protein, converting chemical energy into mechanical energy through the hydrolysis of ATP. The gene encoding a human ortholog of rat NUDE1 is transcribed from the reverse strand of this gene, and its 3' end overlaps with that of the latter. The pericentric inversion of chromosome 16 [inv(16)(p13q22)] produces a chimeric transcript that encodes a protein consisting of the first 165 residues from the N terminus of core-binding factor beta in a fusion with the C-terminal portion of the smooth muscle myosin heavy chain. This chromosomal rearrangement is associated with acute myeloid leukemia of the M4Eo subtype. Alter

Research Area

Pathology

Image Data



Human appendix tissue was stained with Anti-Myosin Heavy Chain, Smooth Muscle (SMMHC) Antibody