

---

**Product Name: HSP60 Mouse Monoclonal Antibody****Catalog #: AMM22128**

For research use only.

**Summary**

<b>Description</b>	Mouse Monoclonal Antibody
<b>Host</b>	Mouse
<b>Application</b>	IHC,ELISA
<b>Reactivity</b>	Human,Mouse,Rat
<b>Conjugation</b>	Unconjugated
<b>Modification</b>	Unmodified
<b>Isotype</b>	IgG2b,Kappa
<b>Clonality</b>	Monoclonal
<b>Form</b>	Liquid
<b>Storage</b>	Aliquot and store at -20°C (valid for 12 months). Avoid freeze/thaw cycles.
<b>Shipping</b>	Ice bags
<b>Buffer</b>	PBS, 50% glycerol, 0.05% Proclin 300, 0.05%BSA
<b>Purification</b>	The antibody was affinity-purified from ascites by affinity-chromatography using specific immunogen.

**Application**

<b>Dilution Ratio</b>	IHC 1:200-400;ELISA 1:500-5000
<b>Molecular Weight</b>	Calculated MW:60kDa,Observed MW:60kDa

**Antigen Information**

<b>Gene Name</b>	MAPK7 60 kDa heat shock protein, mitochondrial;60 kDa chaperonin;Chaperonin 60;CPN60;Heat
<b>Alternative Names</b>	shock protein 60;HSP-60;Hsp60;HuCHA60;Mitochondrial matrix protein P1;P60 lymphocyte protein;
<b>Gene ID</b>	Human:3329
<b>SwissProt ID</b>	Human:P10809
<b>Immunogen</b>	Synthesized peptide derived from human HSP60 AA range: 500-573

**Background**

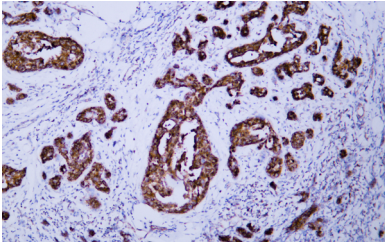
This gene encodes a member of the chaperonin family. The encoded mitochondrial protein may function as a signaling

molecule in the innate immune system. This protein is essential for the folding and assembly of newly imported proteins in the mitochondria. This gene is adjacent to a related family member and the region between the 2 genes functions as a bidirectional promoter. Several pseudogenes have been associated with this gene. Two transcript variants encoding the same protein have been identified for this gene. Mutations associated with this gene cause autosomal recessive spastic paraplegia 13. [provided by RefSeq, Jun 2010],

## Research Area

Pathology

## Image Data



Human breast carcinoma tissue was stained with Anti-HSP60 Antibody