
Product Name: GCDFP-15 Mouse Monoclonal Antibody**Catalog #: AMM22125**

For research use only.

Summary

Description	Mouse Monoclonal Antibody
Host	Mouse
Application	IHC,ELISA
Reactivity	Human
Conjugation	Unconjugated
Modification	Unmodified
Isotype	IgG1,Kappa
Clonality	Monoclonal
Form	Liquid
Storage	Aliquot and store at -20°C (valid for 12 months). Avoid freeze/thaw cycles.
Shipping	Ice bags
Buffer	PBS, 50% glycerol, 0.05% Proclin 300, 0.05%BSA
Purification	The antibody was affinity-purified from ascites by affinity-chromatography using specific immunogen.

Application

Dilution Ratio	IHC 1:200-400;ELISA 1:500-5000
Molecular Weight	Calculated MW:17kDa

Antigen Information

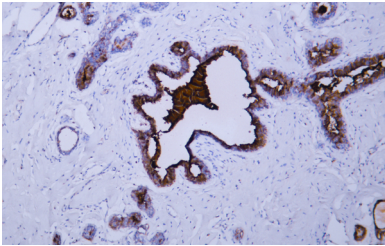
Gene Name	PIP GCDFP15 GPIP4
Alternative Names	Prolactin-inducible protein;Gross cystic disease fluid protein 15;GCDFP-15;Prolactin-induced protein;Secretory actin-binding protein;SABP;gp17;
Gene ID	Human:5304
SwissProt ID	Human:P12273
Immunogen	Synthesized peptide derived from human Gross cystic disease fluid protein-15 (GCDFP-15) AA range: 50-146

Background

Research Area

Pathology

Image Data



Human breast carcinoma tissue was stained with Anti-GCDFP-15 Antibody